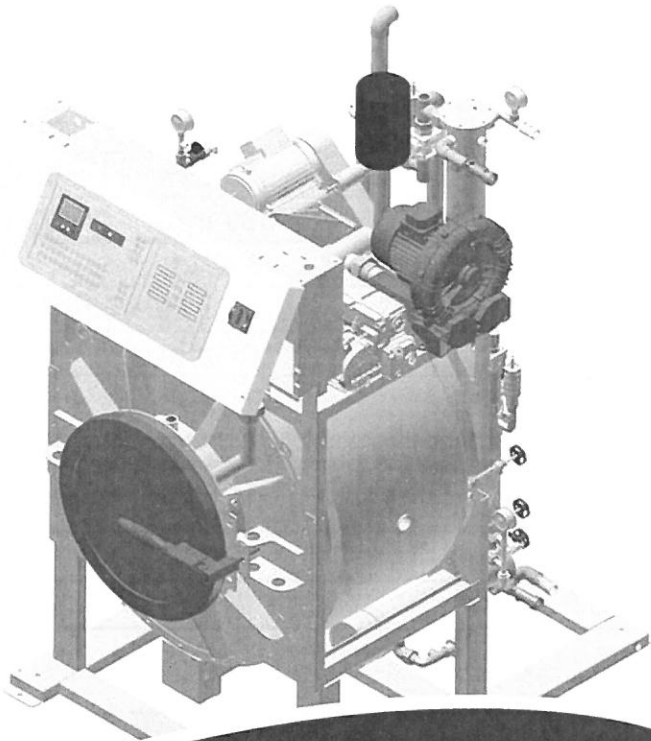
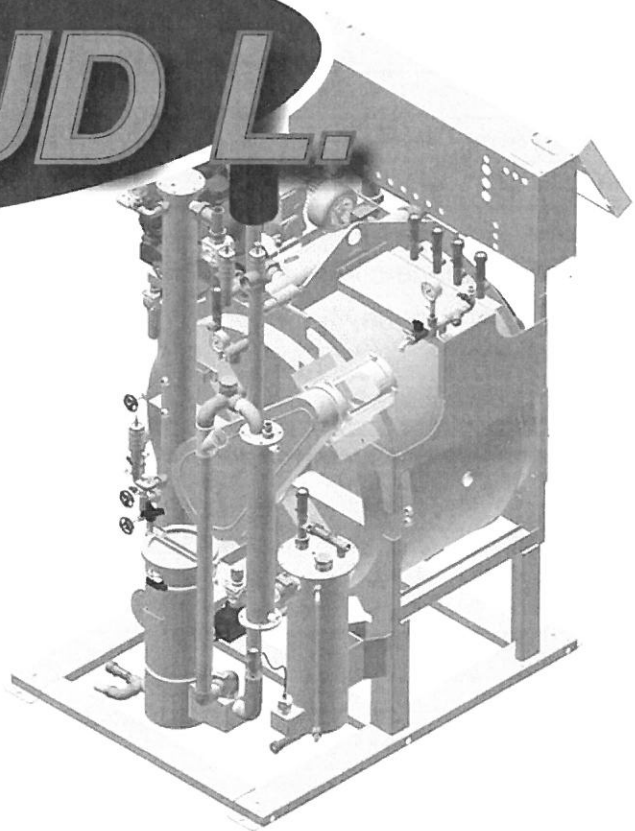




CLOUD L.



CLOUD L.



**STEAM CLEANING
MACHINE**

TECHNICAL INFORMATION



All technical data are subject to change without notice.

WORKING MACHINE WITH SOLVENT	WATER	
MACHINE CAPACITY	15 Kg	35 Lbs

BASKET		
Diameter	900 mm	35.4 inches
Depth	535 mm	21 inches
Volume	340 Lt	12 cu.ft
Basket speed	20 ÷ 60 rpm	
Door opening	500 mm	20 inches

BOILERS <i>Filling with soft water with hardness <5°f (<50 ppm)</i>		
Heater boiler water capacity	6 Lt	1.6 gal
Cleaning chamber cavity heating water capacity	31 Lt	8.2 gal
Boilers Total water capacity	37 Lt	9.8 gal

ELECTRIC POWER	400V - 3~50Hz		220V - 3~60Hz	
* Main motor (Inverter)	3 Hp	0.5÷2.2 Kw	3 Hp	0.5 ÷ 2.2 Kw
Dehumidification Blower	1 Hp	0.75 Kw	1 Hp	0.75 Kw
Vacuum Pump	1 Hp	0.75 Kw	1.2 Hp	0.9 Kw
Air motor compressor (optional)	0.5 Hp	0.38 Kw	0.5 Hp	0.38 Kw
<i>Electric Version:</i>				
Heater boiler electric elements	-	12 Kw	-	12 Kw
Cleaning chamber cavity heating electric elements	-	3 Kw	-	3 Kw
Dehumidification electric elements	-	1.5 Kw	-	1.5 Kw

* POWER CHANGES ACCORDINGLY TO THE USE OF THE MACHINE

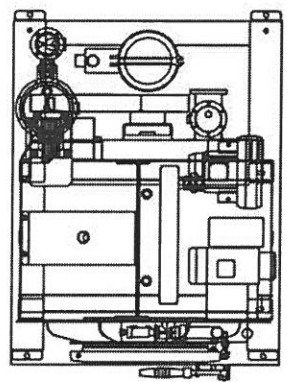
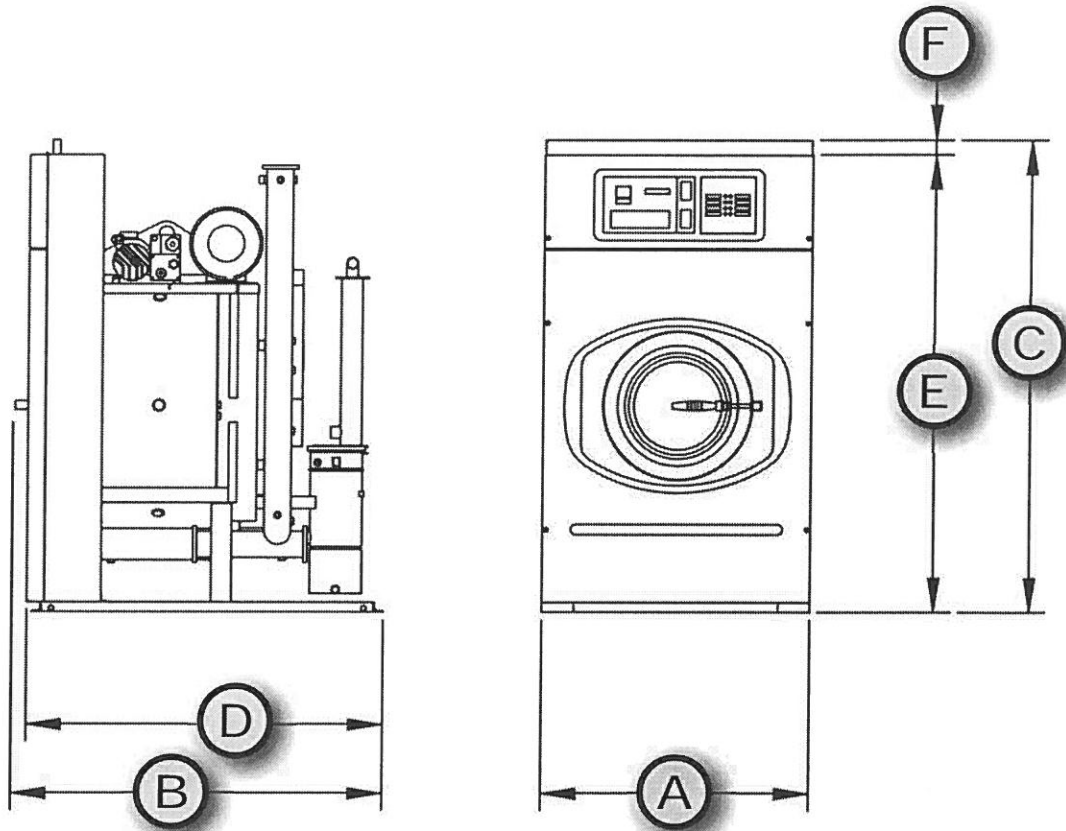
NOTE: Acoustic emission level of the machine is lower than 70 dB (A)

INFORMATION FOR THE ELECTRICAL CONNECTIONS (400V - 3~50Hz)		
Max. Power - ELECTRIC Version	18.5 Kw	35 Amp
Max. Power - STEAM Version	2 Kw	5 Amp
Dissipated heat	- Kcal	

INFORMATION FOR THE ELECTRICAL CONNECTIONS (220V - 3~60Hz)		
Max. Power - ELECTRIC Version	18.5 Kw	50 Amp
Max. Power - STEAM Version	2 Kw	8 Amp
Dissipated heat	- Kcal	



DIMENSIONS AND WEIGHTS

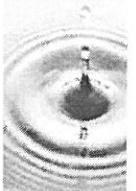


DIMENSIONS		
A	1100 mm	46.3 inches
B	1520 mm	59.8 inches
C	1945 mm	76.6 inches
D	1460 mm	57.5 inches
E	1885 mm	74.2 inches
F	60 mm	2.4 inches

CHARGES		
Empty machine weight	643 Kg	1418 Lbs
Machine weight with water	690 Kg	1521 Lbs
Static charge on the floor	451 Kg/m ²	92 Lbs/ft ²

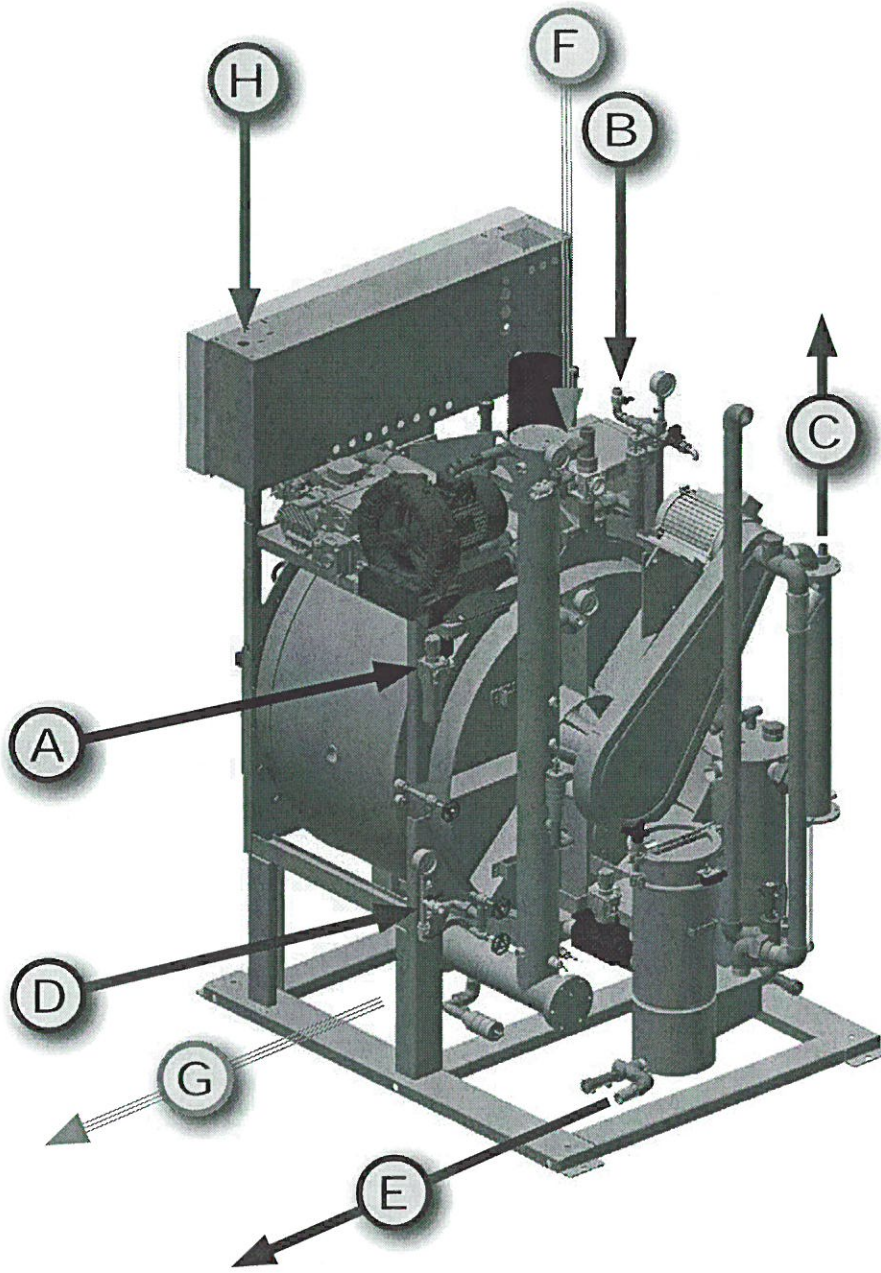
GENERAL INFORMATION		
Required water capacity	10 Lt/min	2.6 gall/min
Required water pressure	2 ÷ 3 bar	29 ÷ 44 psi
Required water temperature	18 ÷ 23 °C	65 ÷ 73 °F
Required air pressure	7 ÷ 8 bar	100 ÷ 115 psi
Required steam* pressure (Steam Version)	1.5 ÷ 2.5 bar	22 ÷ 36 psi
Required steam* availability (Steam Version)	10 Kg/h	22 Lbs/h

* Relative values of dry saturated steam.



CONNECTIONS

TECHNICAL INFORMATION



A	Compressed air inlet	Ø 6mm	Ø 1/4"
B	Cooling water inlet	Ø 1/2"	
C	Cooling water outlet	Ø 1/2"	
D	Demineralized water inlet	Ø 1/4"	
E	Water discharge	Ø 1"	
F	Steam inlet (Only steam version)	Ø 1/2"	
G	Condensate outlet (Only steam version)	Ø 1/2"	
H	Electric connection		

