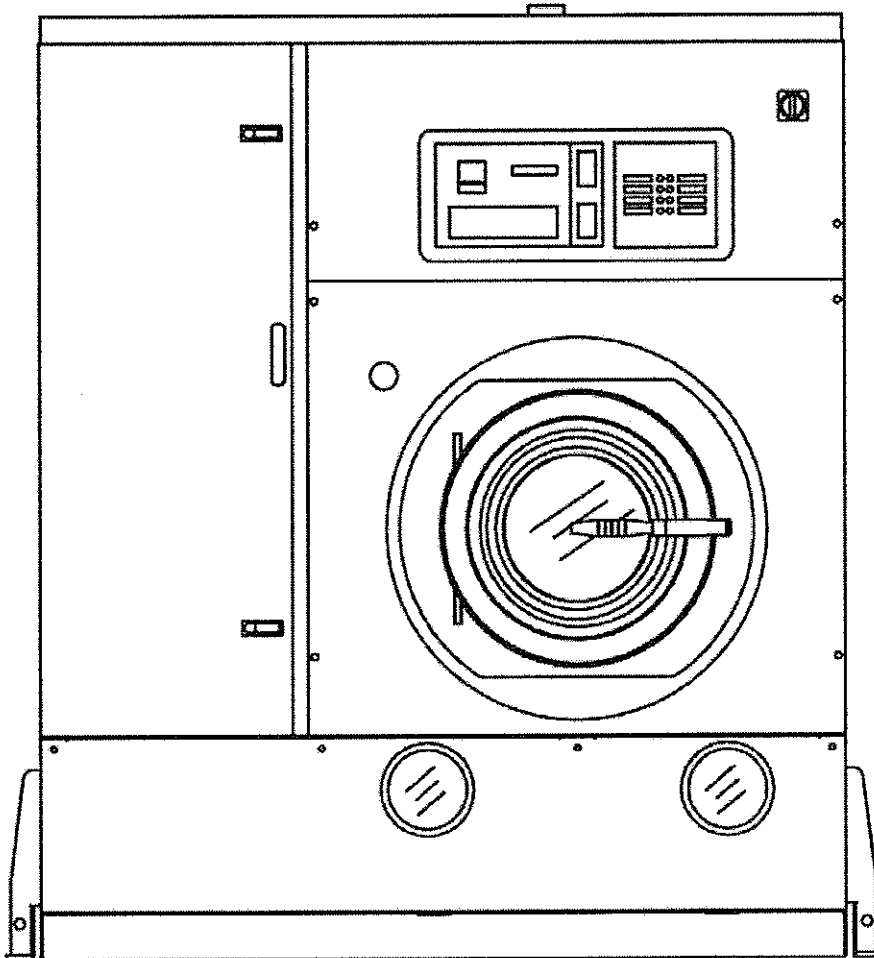




TECHNICAL INFORMATION



HXL 8018 C



WORKING MACHINE WITH SOLVENT	HYDROCARBON	
MACHINE CAPACITY	18 Kg	40 Lbs

BASKET		
Diameter	900 mm	35.4 inches
Depth	535 mm	21 inches
Volume	340 Lt	12 cu.ft
Wash speed	20 ÷ 50 rpm	
Extract speed	300 ÷ 520 rpm	
Door opening	500 mm	20 inches

SOLVENT TANKS		
Useful volume tank 1	118 Lt	31 gal
Useful volume tank 2	118 Lt	31 gal
Useful volume tank 3	-	-
FLOOR SAFETY TANK CAPACITY	230 Lt	61 gal


ELECTRIC POWER	400V - 3~50Hz		220V - 3~60Hz	
Wash - Extract (With Inverter)	*1.7÷4.7 Hp	*1.3÷3.5 Kw	*1.7÷4.7 Hp	*1.3÷3.5 Kw
Solvent pump motor	1 Hp	0.75 Kw	1 Hp	0.75 Kw
Fan motor	2 Hp	1.5 Kw	3.5 Hp	2.65 Kw
Refrigerator compressor	5 Hp	3.75 Kw	5 Hp	3.75 Kw
Remote Condenser (Optional)	0.21 Hp	0.16 Kw	0.21 Hp	0.16 Kw
Heater electric elements	-	9 Kw	-	9 Kw
Air motor compressor (Optional)	0.5 Hp	0.38 Kw	0.5 Hp	0.38 Kw

* POWER CHANGES ACCORDINGLY TO THE USE OF THE MACHINE

NOTE: Acoustic emission level of the machine is lower than 70 dB (A)

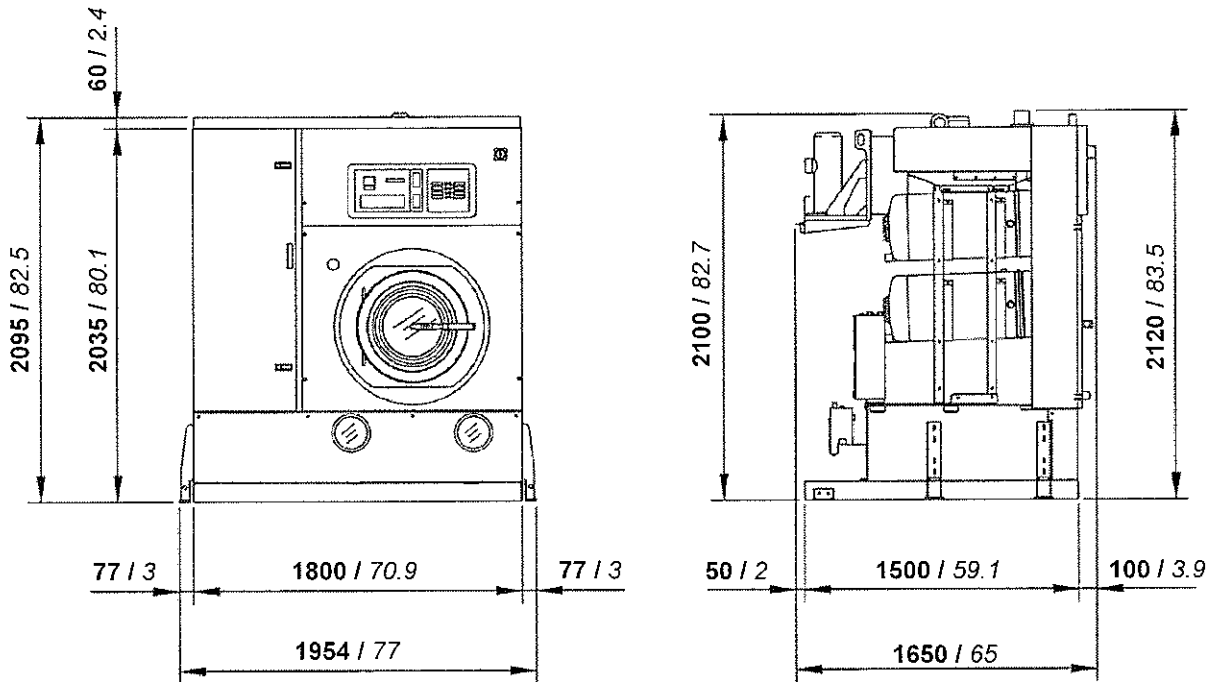


FILTRATION AVAILABLE IN THIS MODEL

TWO LARGE CARTRIDGE - KR			
	Vol. large cartridge housing KR	85x2=170 Lt	22.5x2=45 gal
	Area large cartridge KR	2.6x6=15.6 mt ²	28x6=168 ft ²
	Cartridges quantity KR	nr 3x2=6	



DIMENSIONS AND WEIGHTS

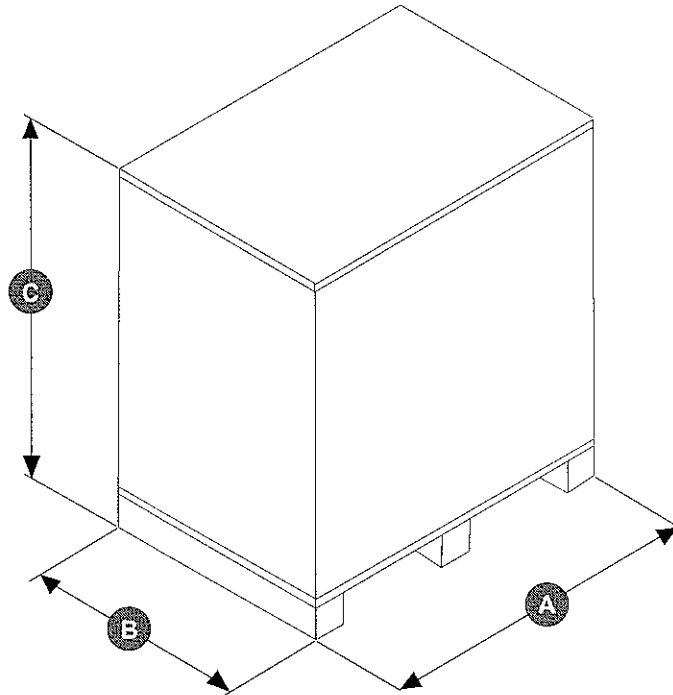


mm / inches

CHARGES		
Empty machine weight	1520 Kg	3351 Lbs
Machine weight with solvent	1833 Kg	4041 Lbs
Static charge on the floor with solvent	679 Kg/m ²	139 Lbs/ft ²
Dynamic charge on the floor (+10%)	1053 Kg/m ²	216 Lbs/ft ²



PACKAGED MACHINE DIMENSIONS AND WEIGHTS

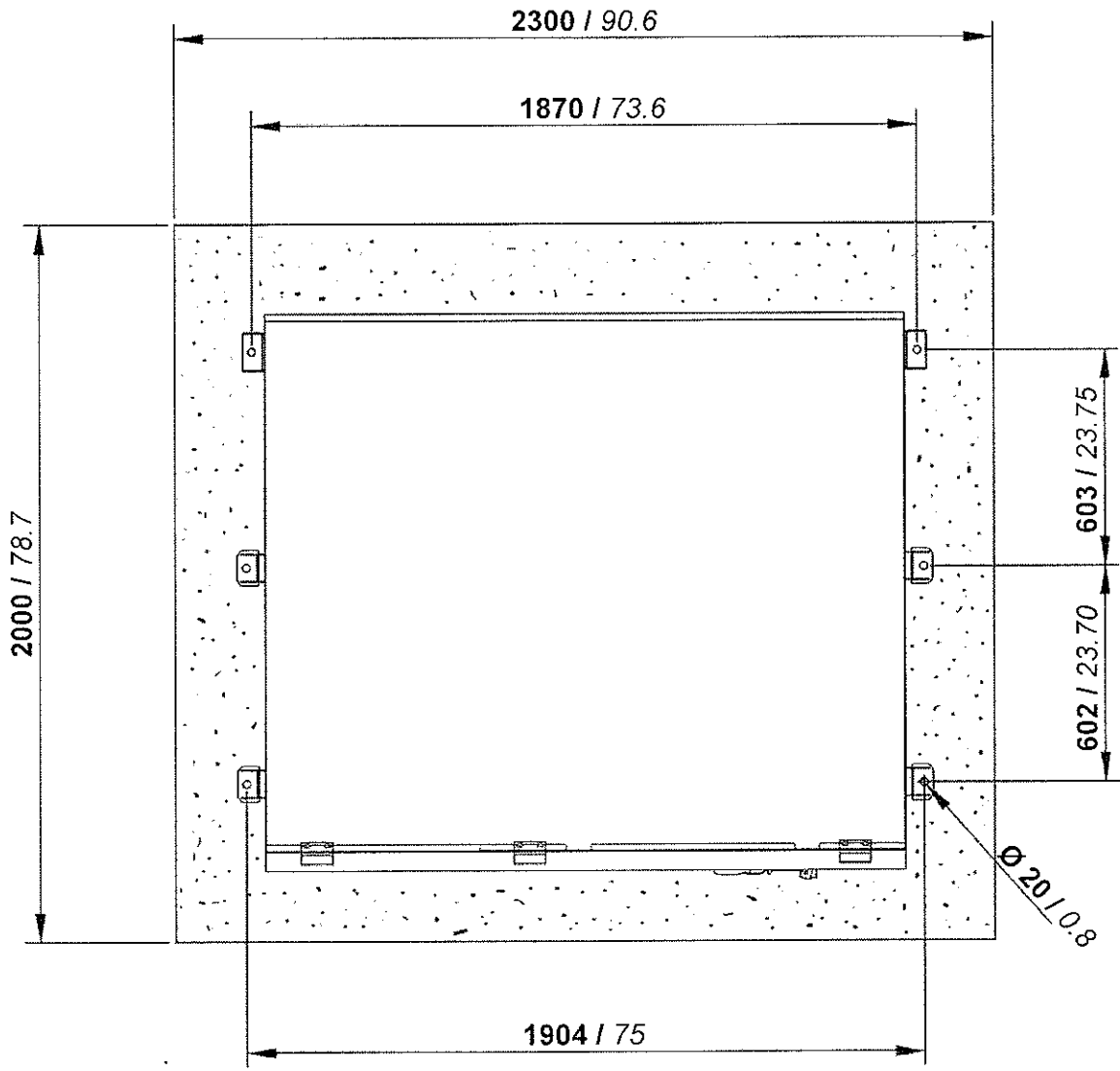
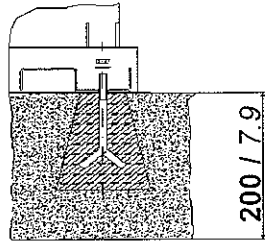


PACKAGED MACHINE DIMENSIONS							
Machine type	Carton		Wooden cage		Wooden case		
Standard	A	- mm	- inches	- mm	- inches	- mm	- inches
	B	- mm	- inches	- mm	- inches	- mm	- inches
	C	- mm	- inches	- mm	- inches	- mm	- inches

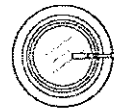
PACKAGED MACHINE WEIGHTS						
Machine type	Carton		Wooden cage		Wooden case	
Standard	- Kg	- Lbs	- Kg	- Lbs	- Kg	- Lbs



FIXING POINTS

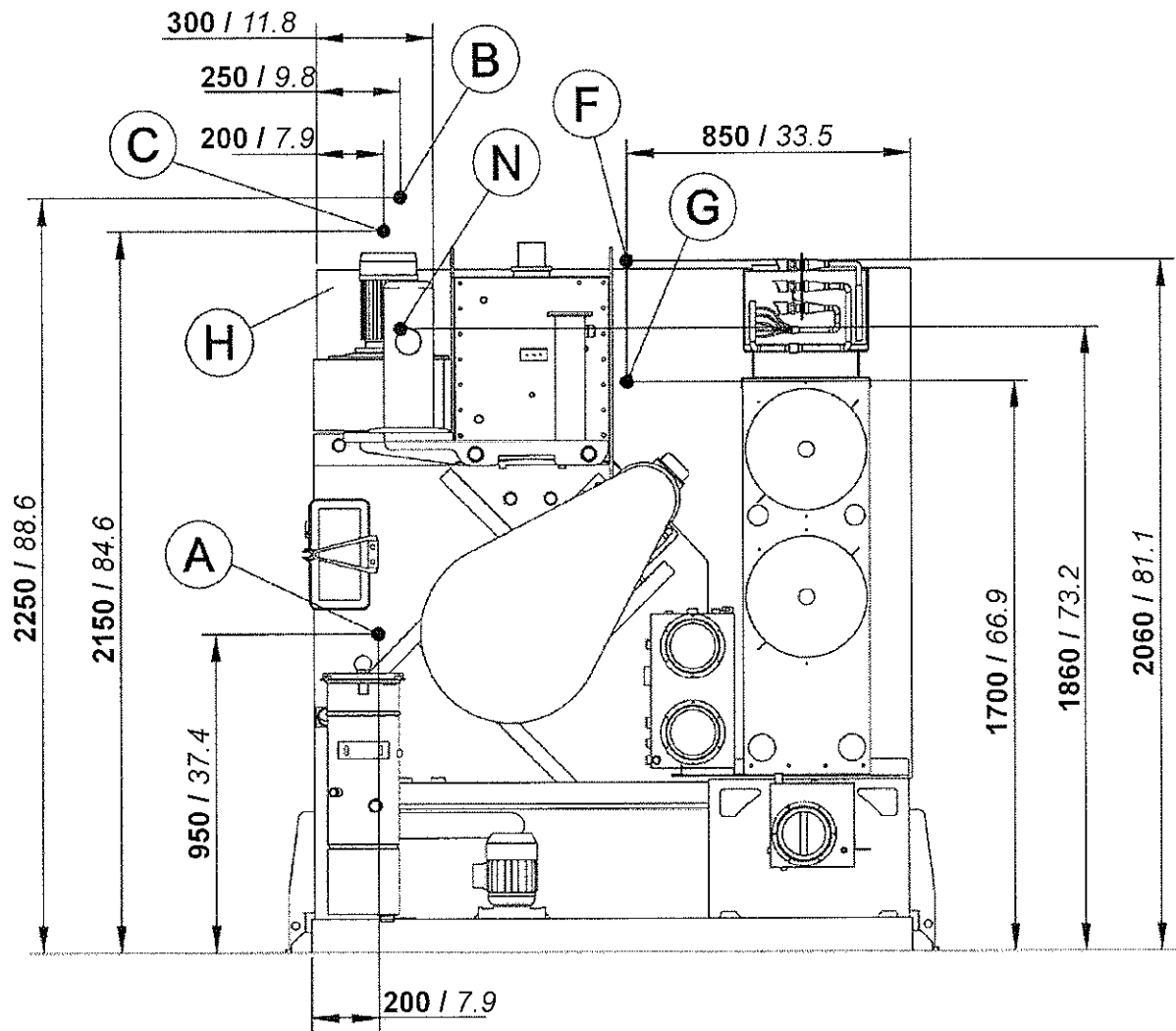


mm / inches





CONNECTIONS



mm / inches

A	Compressed air inlet	Ø 6mm	Ø 1/4"
B	Water inlet (Opt.)	Ø 3/4"	
C	Water outlet (Opt.)	Ø 3/4"	
D	-	-	
E	-	-	
F	Steam heater inlet (Opt.)	Ø 1/2"	
G	Condensate heater outlet (Opt.)	Ø 1/2"	
H	Electric connection		
N	Nitrogen feeding connection (N ₂)		



SOLVENT TYPE	HYDROCARBON			
NECESSARY QUANTITY OF SOLVENT TO FILL THE MACHINE				
Machine version - without Filters	236 Lt	182 Kg	62 gal	401 Lbs
Machine version - 2 KR Filter	406 Lt	313 Kg	107 gal	690 Lbs

INFORMATION FOR THE ELECTRICAL CONNECTIONS		(400V - 3~50Hz)	
ELECTRIC Version	- Kw	- Amp	
STEAM Version	7.5 Kw	16 Amp	
Dissipated heat	- Kcal		

INFORMATION FOR THE ELECTRICAL CONNECTIONS		(220V - 3~60Hz)	
ELECTRIC Version	- Kw	- Amp	
STEAM Version	9 Kw	45 Amp	
Dissipated heat	- Kcal		

GENERAL INFORMATION		
Required water capacity	10 Lt/min	2.6 gal/min
Required water pressure	2 ÷ 3 bar	29 ÷ 44 psi
Required water temperature	18 ÷ 23 °C	65 ÷ 73 °F
Required air pressure	7 ÷ 8 bar	100 ÷ 115 psi
Required steam pressure (Steam Version)	3.5 ÷ 4 bar	51 ÷ 58 psi
Required steam availability (Steam Version)	15 ÷ 20 Kg/h	33 ÷ 44 Lbs/h

All technical data are subject to change without notice.