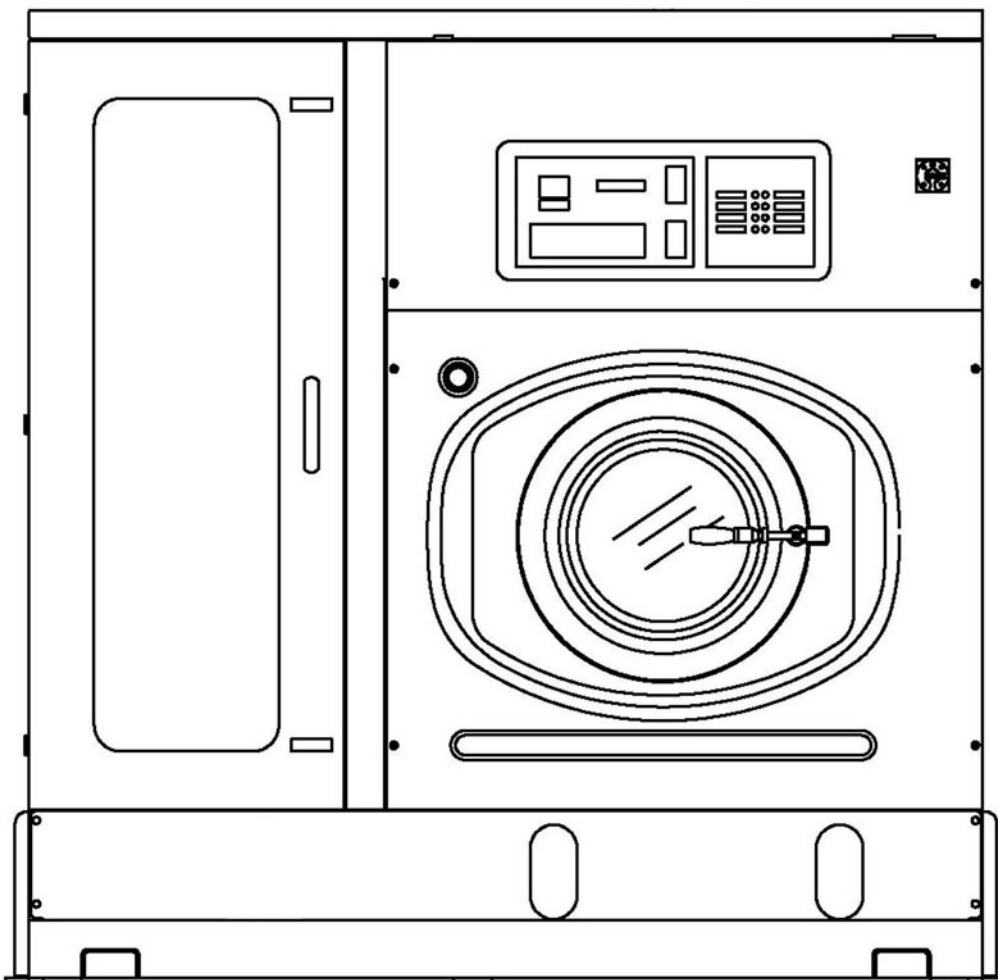




TECHNICAL INFORMATION



NOVA 60E



WORKING MACHINE WITH SOLVENT	HYDROCARBON	
MACHINE CAPACITY	25 Kg	55 ÷ 60 Lbs

BASKET		
Diameter	1000 mm	39,3 inches
Depth	640 mm	25,1 inches
Volume	500 Lt	17,6 cu.ft
Wash speed	20 ÷ 55 rpm	
Extract speed	300 ÷ 520 rpm	
Door opening	500 mm	20 inches

SOLVENT TANKS		
Useful volume tank 1	160 Lt	42.3 gal
Useful volume tank 2	160 Lt	42.3 gal
Useful volume tank 3	- Lt	- gal
FLOOR SAFETY TANK CAPACITY	430 Lt	113.6 gal

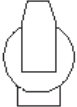
DECANTER FILTER		
Total volume	50 Lt	13 gal

ELECTRIC POWER	400V - 3~50Hz		220V - 3~60Hz	
Wash - Extract (With Inverter)	*2.7 Hp	*2 Kw	*2.7 Hp	*2 Kw
Solvent pump motor 1	1 Hp	0.75 Kw	1 Hp	0.75 Kw
Solvent pump motor 2	1 Hp	0.75 Kw	1 Hp	0.75 Kw
Fan motor	2 Hp	1.5 Kw	3 Hp	2.25 Kw
Refrigerator compressor	5 Hp	3.75 Kw	5 Hp	3.75 Kw
Nylon filter motor	0.75 Hp	0.55 Kw	0.75 Hp	0.55 Kw
Remote condenser	0.42 Hp	0.32 Kw	0.42 Hp	0.32 Kw
Air motor compressor (optional)	0.5 Hp	0.37 Kw	-	-

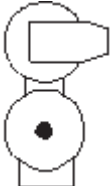
* POWER CHANGES ACCORDINGLY TO THE USE OF THE MACHINE

NOTE: Acoustic emission level of the machine is lower than 70 dB (A)


FILTRATION AVAILABLE IN THIS MODEL
ONE NYLON FILTER

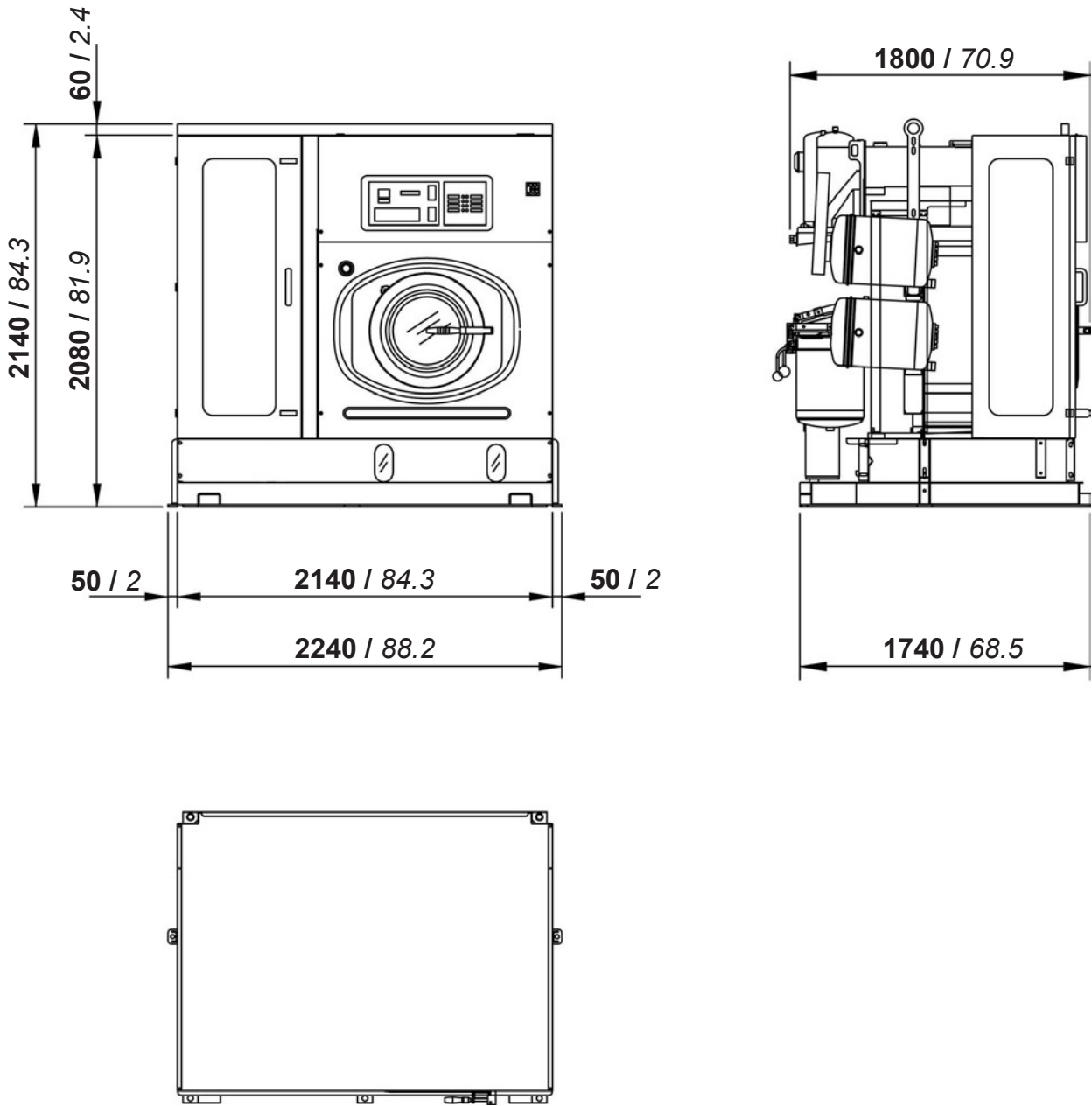
	Volume nylon filter housing	75 Lt	<i>20 gal</i>
	Nylon filter area	5.5 mt²	<i>59 ft²</i>
	Filter disks	39 nr	

ONE NYLON FILTER AND ONE LARGE CARTRIDGE - KR

	Volume nylon filter housing	75 Lt	<i>20 gal</i>
	Nylon filter area	5.5 mt²	<i>59 ft²</i>
	Filter disks	39 nr	
	Vol. large cartridge housing KR	75 Lt	<i>20 gal</i>
	Area large cartridge KR	2.6x3=7.8 mt²	<i>28x3=84 ft²</i>
	Cartridges quantity KR	nr 3	



DIMENSIONS AND WEIGHTS

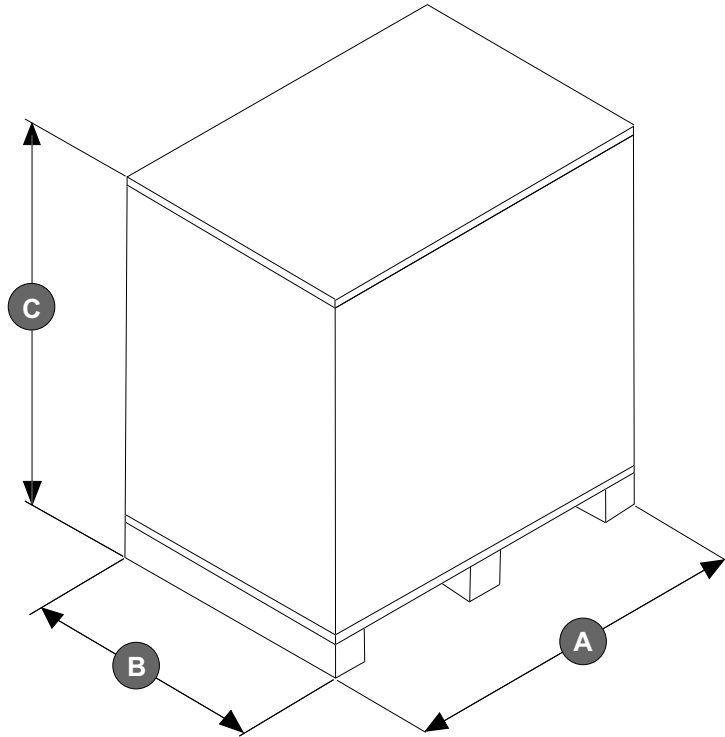


mm / inches

CHARGES - STANDARD VERSION		
Empty machine weight	1780 Kg	3924 Lbs
Machine weight with solvent	2296 Kg	5062 Lbs
Static charge on the floor with solvent	617 Kg/m²	126 Lbs/ft²
Dynamic charge on the floor (+10%)	1020 Kg/m²	209 Lbs/ft²



PACKAGED MACHINE DIMENSIONS AND WEIGHTS

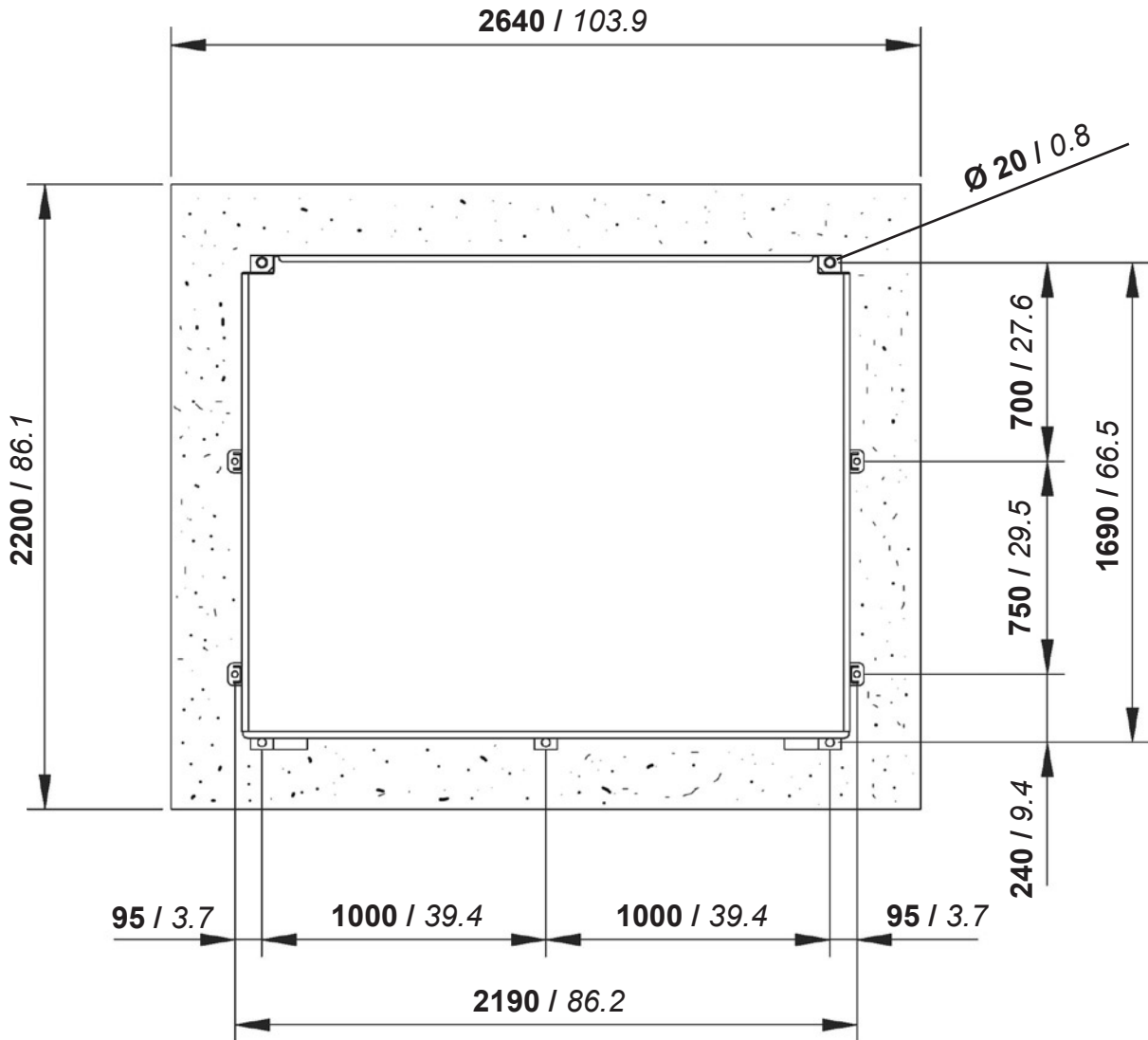
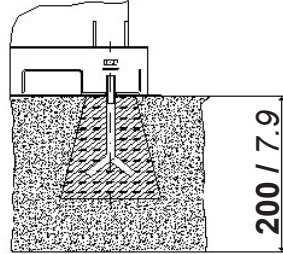


PACKAGED MACHINE DIMENSIONS							
Machine type		Carton		Wooden cage		Wooden case	
Standard	A	2240 mm	88.2 inches	2280 mm	89.8 inches	- mm	- inches
	B	1850 mm	72.8 inches	2020 mm	79.5 inches	- mm	- inches
	C	2430 mm	95.7 inches	2480 mm	97.6 inches	- mm	- inches

PACKAGED MACHINE WEIGHTS						
Machine type	Carton		Wooden cage		Wooden case	
Standard	1875 Kg	4134 Lbs	2015 Kg	4442 Lbs	- Kg	- Lbs



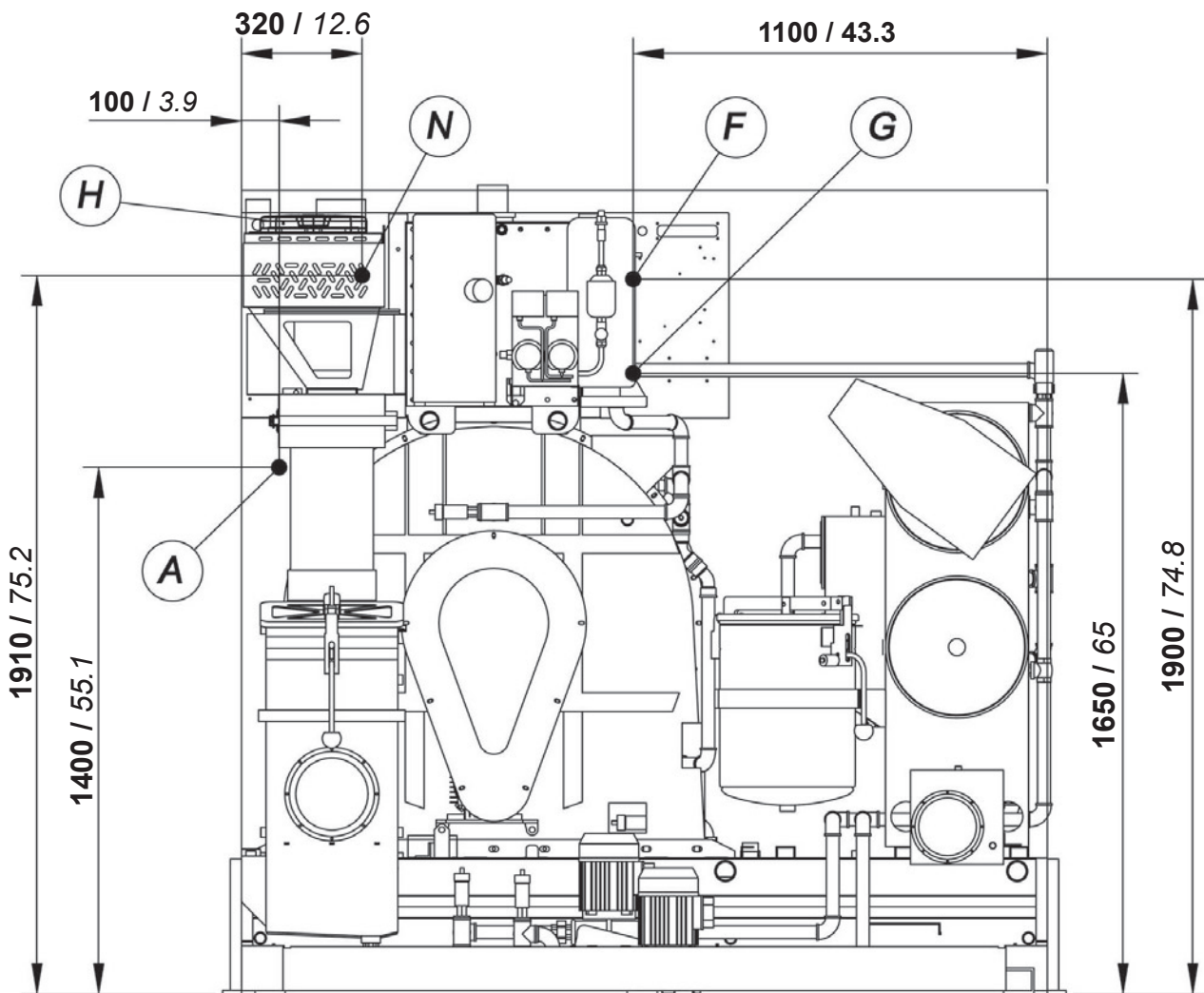
FIXING POINTS WITH FLOOR TANK



mm / inches



CONNECTIONS



mm / inches

A	Compressed air inlet	mm 6	Ø 1/4"
B	-	-	-
C	-	-	-
D	-	-	-
E	-	-	-
F	Steam heater inlet (Opt.)	Ø 1/2"	
G	Condensate heater outlet (Opt.)	Ø 1/2"	
H	Electric connection		
N	Nitrogen feeding connection (N ₂)		



SOLVENT TYPE	HYDROCARBON			
NECESSARY QUANTITY OF SOLVENT TO FILL THE MACHINE				
Machine version - 1 Nylon Filter	595 Lt	458 Kg	157 gal	1010 Lbs
Machine version - 1 Nylon Filter + 1 KR	670 Lt	516 Kg	177 gal	1138 Lbs

INFORMATION FOR THE ELECTRICAL CONNECTIONS		(400V - 3~50Hz)	
Standard Version	8.5 Kw	21 Amp	
Dissipated heat	- Kcal		

INFORMATION FOR THE ELECTRICAL CONNECTIONS		(220V - 3~60Hz)	
Standard Version	9.5 Kw	31.5 Amp	
Dissipated heat	- Kcal		

GENERAL INFORMATION		
Required water capacity	-	-
Required water pressure	-	-
Required water temperature	-	-
Required air pressure	bar 7 ÷ 8	psi 100 ÷ 115
Required steam pressure (Steam Version)	bar 4 ÷ 5	psi 55 ÷ 70
Required steam availability (Steam Version)	Kg/h 15 ÷ 20	Lbs/h 33 ÷ 44

All technical data are subject to change without notice.