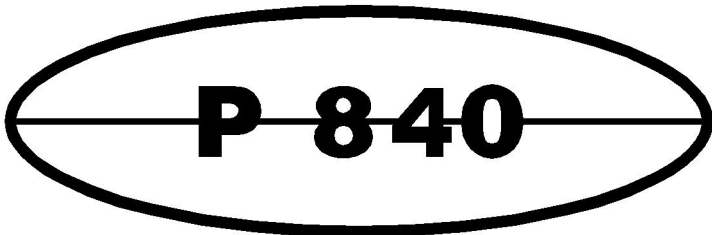
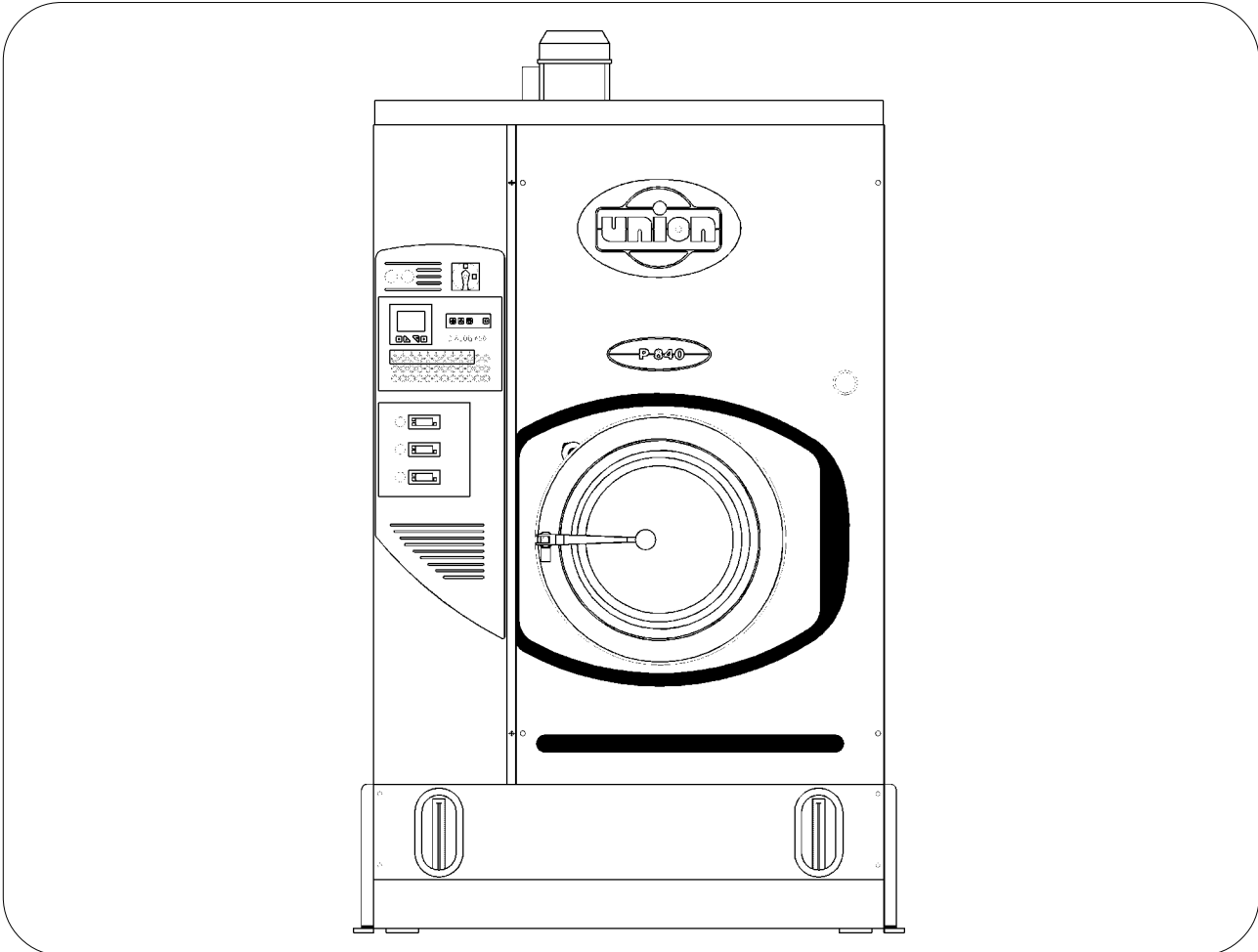




TECHNICAL INFORMATION





WORKING MACHINE WITH SOLVENT:	PERCLORETHILENE	
MACHINE CAPACITY (RATIO 1:20)	Lbs	40

BASKET

Diameter	inches	35.4
Depth	inches	21
Volume	cu-ft	12
Wash speed without Inverter	rpm	40
Extract speed without Inverter	rpm	400
Wash speed with Inverter	rpm	12 ÷ 50
Extract speed with Inverter	rpm	300 ÷ 540
Door opening	inches	20

SOLVENT TANKS

Useful volume tank 1	gal	25
Useful volume tank 2	gal	40
FLOOR SAFETY TANK CAPACITY	gal	83

DESTILLATOR

Useful volume at half inspection	gal	45
Total volume	gal	54
Boiler water capacity	gal	1

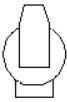

ELECTRIC POWER

(220 V - 60 Hz)

Wash motor	Hp	0.8 ÷ 3	Kw	0.60 ÷ 2.2
Extract motor	Hp	3	Kw	2.2
Solvent pump motor	Hp	1	Kw	0.75
Fan motor	Hp	3	Kw	2.2
Fridge compressor MT65	Hp	5	Kw	3.75
Nylon filter motor	Hp	0.75	Kw	0.55
Still residue pump	Hp	0.75	Kw	0.55
Exhaust fan motor	Hp	0.18	Kw	0.13
Still electric elements	Hp	---	Kw	3 x 3 = 9
Heater electric elements with Turbo Still	Hp	---	Kw	1 x 6 = 6
Air motor compressor	Hp	0.5	Kw	0.37
Fan motor Recuper	Hp	1	Kw	0.75

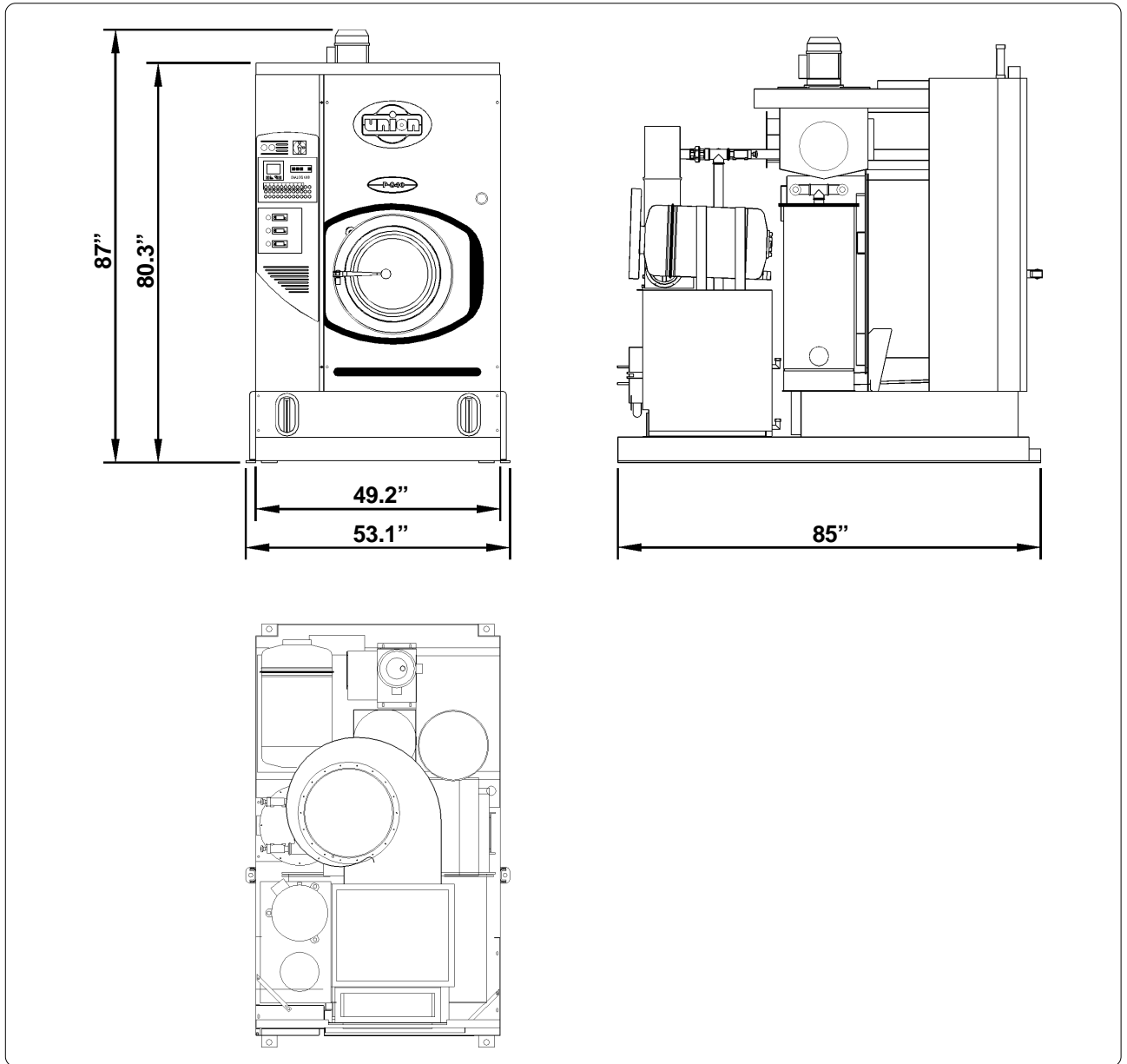
NOTE: Acoustic emission level of the machine is lower than 70 dB (A)



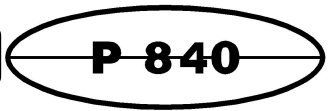
FILTRATION AVAILABLE IN THIS MODEL			
Version - 03	ONE NYLON FILTER		
	Volume nylon filter housing	gal	14.5
	Nylon filter area	ft ²	42
	Filter disks	nr	26
Version - 08	ONE NYLON FILTER AND ONE DECOLORATING FILTER - PR		
	Volume nylon filter housing	gal	14.5
	Nylon filter area	ft ²	42
	Filter disks	nr	26
	PR - Decolorating housing volume	gal	3.4
	PR - Decolorating cartridges	nr	1
	Decolorating cabon quantity	Lbs	4.4



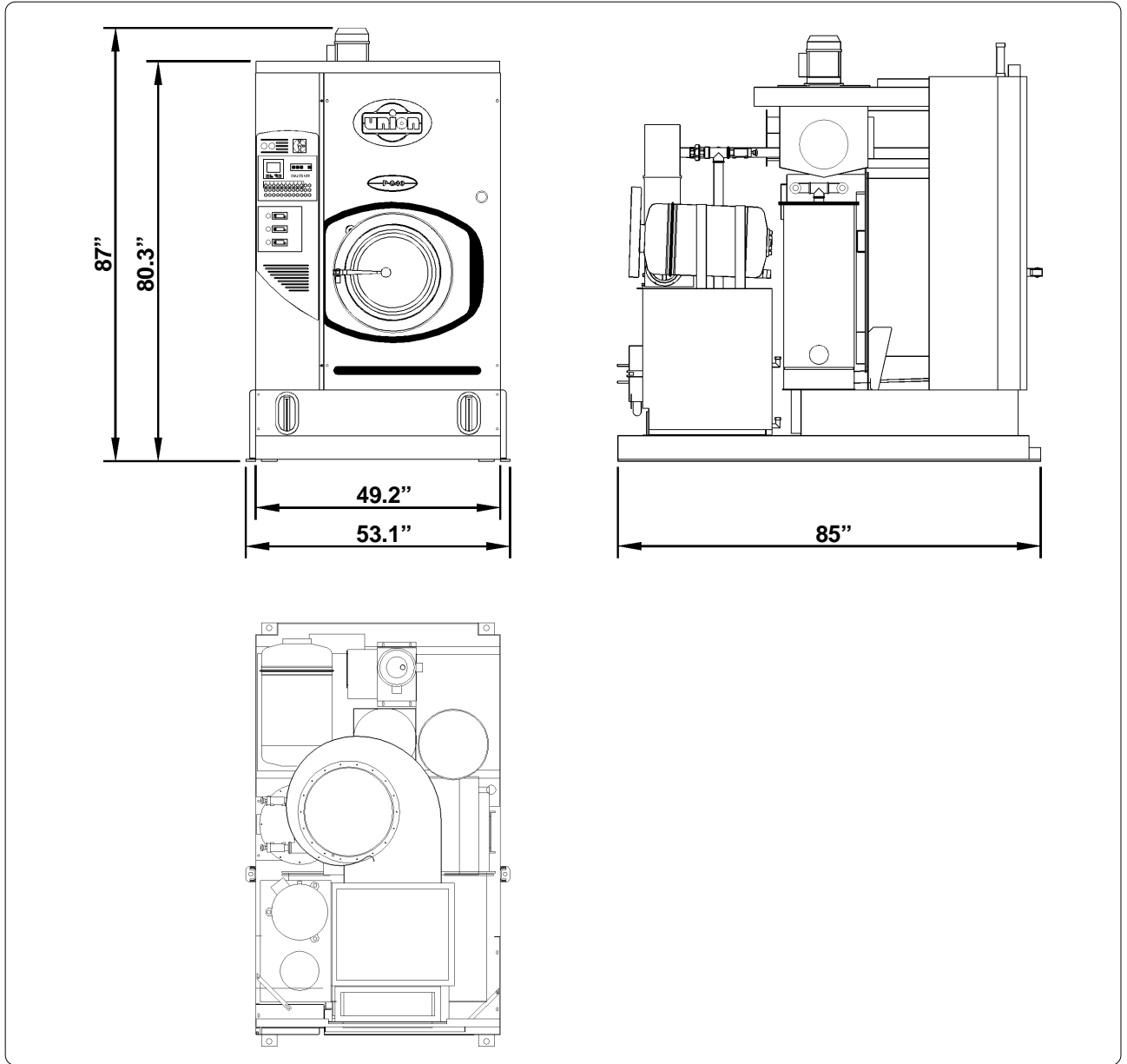
DIMENSIONS AND WEIGHTS - STANDARD Version



CHARGES		
Empty machine weight	Lbs	3329
Machine weight with solvent	Lbs	4442
Static charge on the floor with solvent	Lbs/ft²	153
Dynamic charge on the floor (+10%)	Lbs/ft²	205

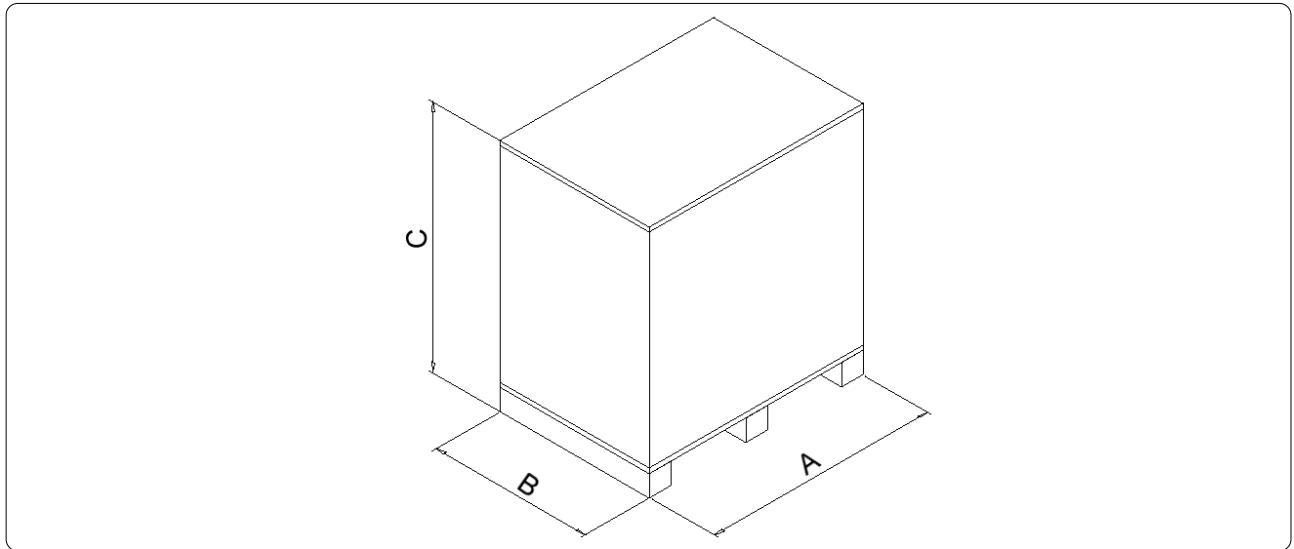


DIMENSIONS AND WEIGHTS - U2000 VERSION



CHARGES		
Empty machine weight	Lbs	3726
Machine weight with solvent	Lbs	4839
Static charge on the floor with solvent	Lbs/ft²	167
Dynamic charge on the floor (+10%)	Lbs/ft²	220

PACKAGED MACHINE DIMENSIONS AND WEIGHTS

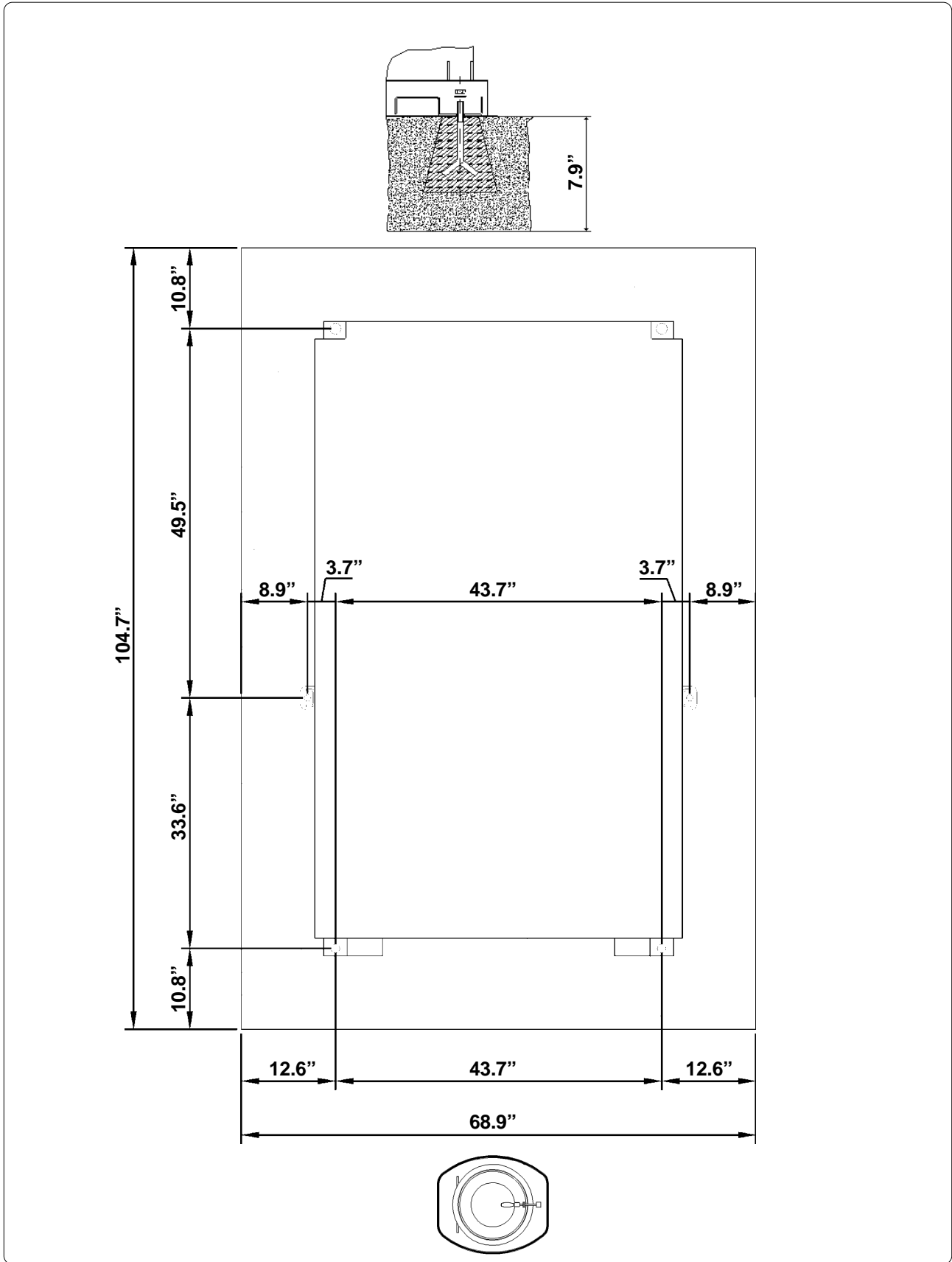


PACKAGED MACHINE DIMENSIONS			
Machine type		Carton	Wooden cage
P840	A		inches 89.8"
	B		inches 60.6"
	C		inches 95.5"
P840 U2000	A		inches 89.8"
	B		inches 60.6"
	C		inches 95.5"

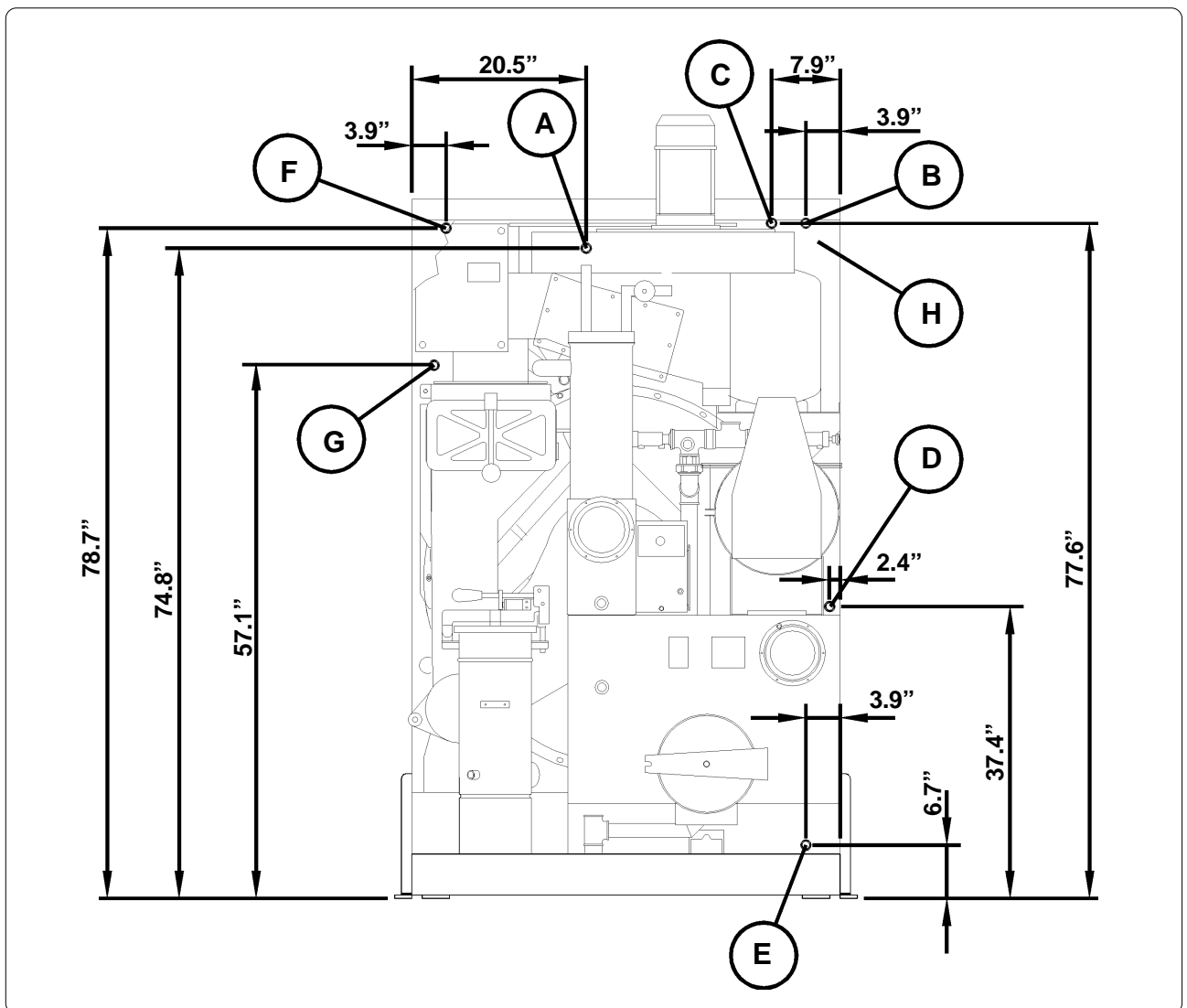
PACKAGED MACHINE WEIGHTS		
Machine type	Carton	Wooden cage
P840		
P840 U2000		Lbs 3968



FIXING POINTS



CONNECTIONS



A	Compressed air inlet	mm 6
B	Water inlet	Ø 3/4"
C	Water outlet	Ø 3/4"
D	Steam still inlet	Ø 1/2"
E	Condensate still outlet	Ø 1/2"
F	Steam heater inlet	Ø 1/2"
G	Condensate heater outlet	Ø 1/2"
H	Electric connection	



SOLVENT TYPE		PERCHLORETHILENE		
NECESSARY QUANTITY OF SOLVENT TO FILL THE MACHINE				
Machine Version - 03	gal	79	Lbs	1058
Machine Version - 08	gal	83	Lbs	1113

INFORMATION FOR THE ELECTRICAL CONNECTIONS (220 V - 60 Hz)

ELECTRIC Version with TURBO STILL (without Inverter)	Kw	-	Amp	-
Dissipated heat	Kw/h	-	Kcal	-
STEAM Version (without Inverter)	Kw	7.5	Amp	51.5
Dissipated heat	Kw/h	1.72	Kcal	1480

ELECTRIC Version with TURBO STILL (with Inverter)	Kw	-	Amp	-
Dissipated heat	Kw/h	-	Kcal	-
STEAM Version (with Inverter)	Kw	-	Amp	-
Dissipated heat	Kw/h	-	Kcal	-

GENERAL INFORMATION		
Required water capacity	gal/min	2.6
Required water pressure	PSI	43 ÷ 72
Required water temperature	°F	64.4 ÷ 73.4
Required air pressure	PSI	101 ÷ 116
Required steam pressure (Steam Version)	PSI	58 ÷ 72
Required steam availability (Steam Version)	Lbs/h	132