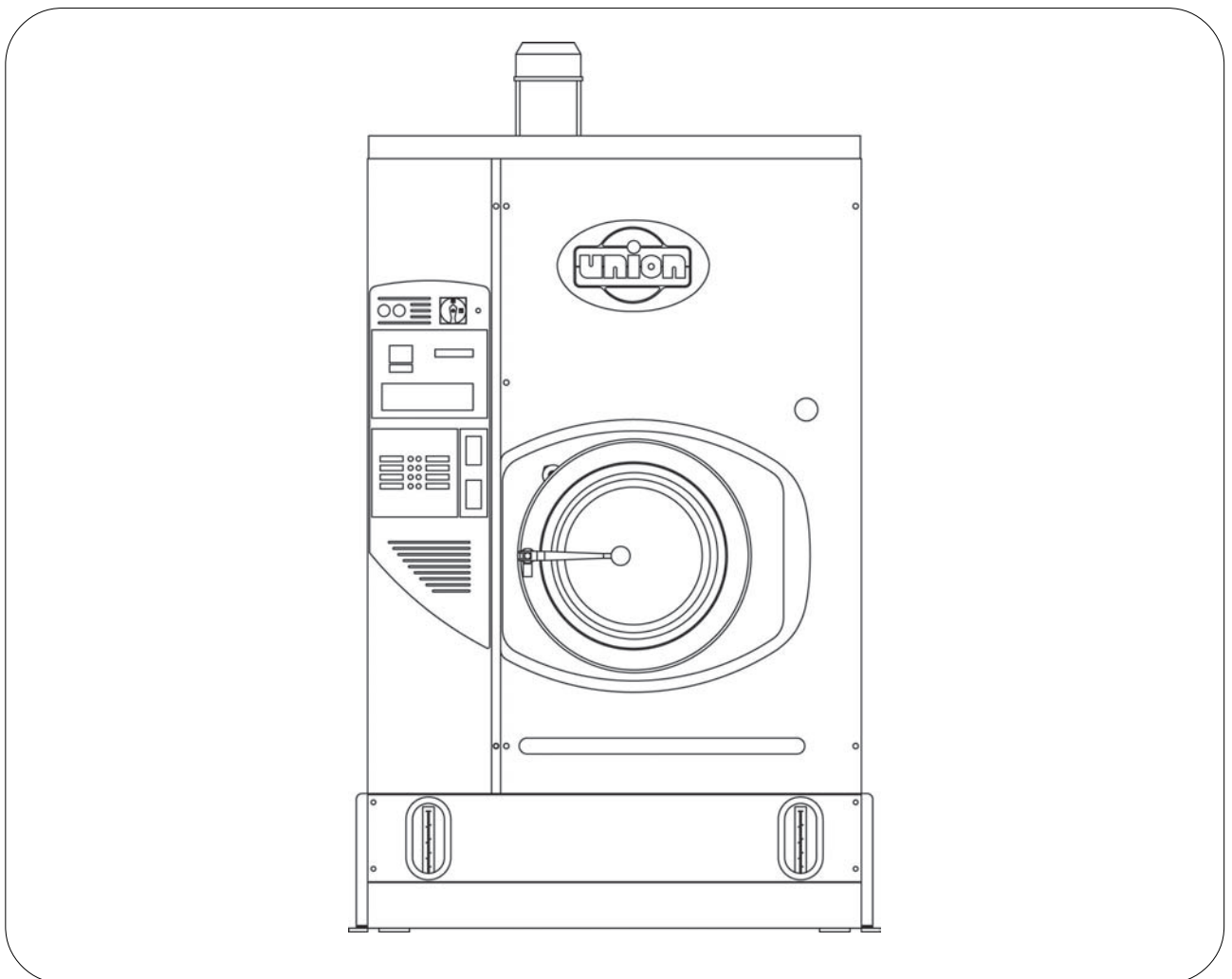




TECHNICAL INFORMATION





WORKING MACHINE WITH SOLVENT:	HYDROCARBON/ GREEN EARTH / SOLVON K4	
MACHINE CAPACITY (RATIO 1:20)	Lbs	45 ÷ 50

BASKET

Diameter	inches	39.4
Depth	inches	20
Volume	cu-ft	14.1
Wash speed	rpm	12 ÷ 50
Extract speed	rpm	300 ÷ 540
Door opening	inches	20

SOLVENT TANKS

Useful volume tank 1	gal	32
Useful volume tank 2	gal	48

FLOOR SAFETY TANK CAPACITY	gal	89
-----------------------------------	-----	----

DESTILLATOR

Useful volume at half inspection	gal	50
Total volume	gal	60
Boiler water capacity	gal	4



ELECTRIC POWER

(220V - 60Hz)

Wash motor - Extract motor	Hp	7.5	Kw	5.6
Solvent pump motor	Hp	1	Kw	0.75
Fan motor	Hp	3	Kw	2.25
Refrigerator compressor	Hp	7	Kw	5.25
Nylon filter motor	Hp	0.75	Kw	0.56
Vacuum pump motor	Hp	0.5	Kw	0.38
Still electric elements	Hp		Kw	13.5
Heater electric elements	Hp		Kw	12
Air motor compressor	Hp	0.5	Kw	0.37
Button trap drying blower	Hp	0.75	Kw	0.55

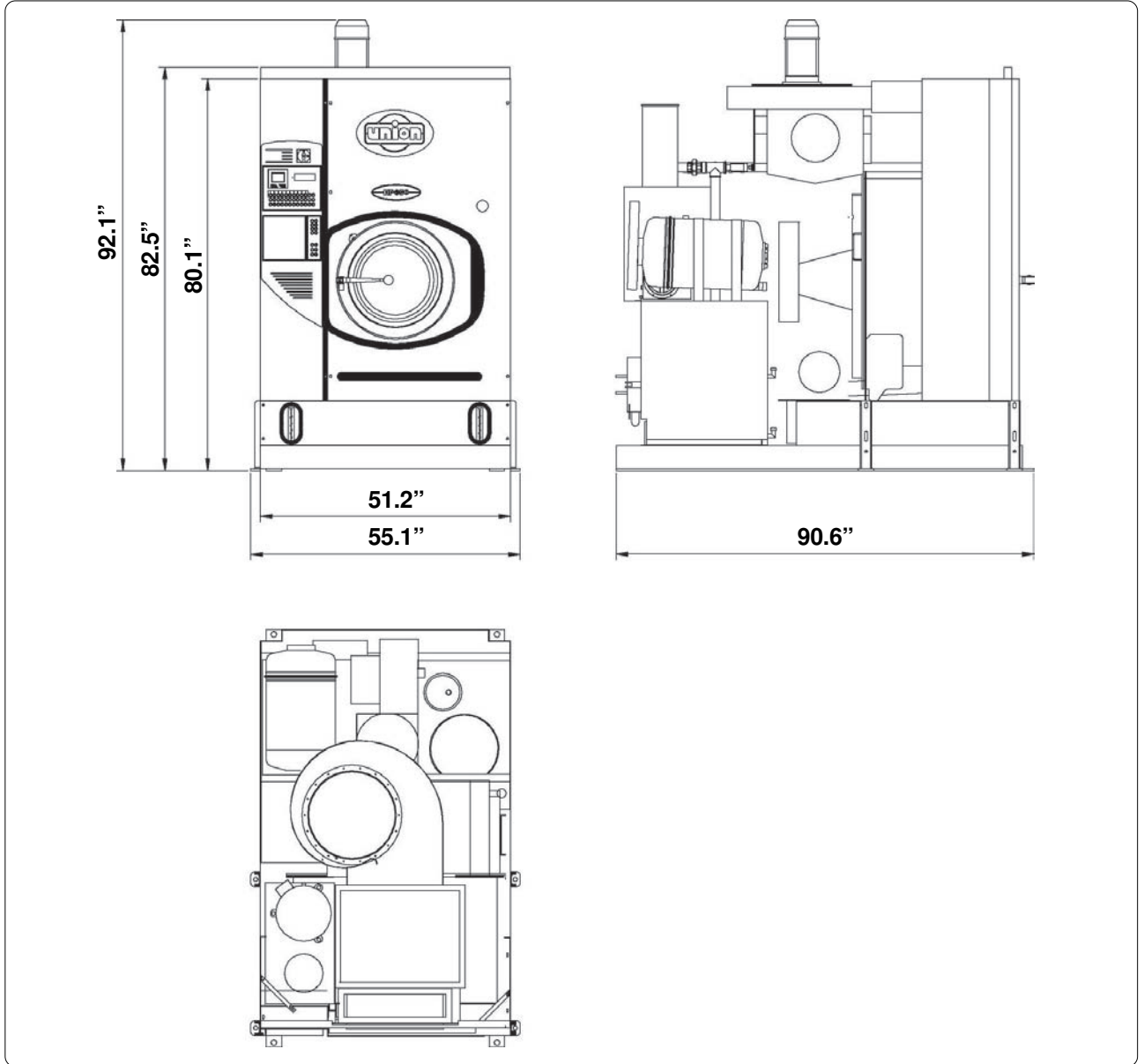
NOTE: Acoustic emission level of the machine is lower than 70 dB (A)



FILTRATION AVAILABLE IN THIS MODEL			
Version - 03	ONE NYLON FILTER		
	Volume nylon filter housing	gal	14.5
	Nylon filter area	ft ²	42
	Filter disks	nr	26
Version - 08	ONE NYLON FILTER AND ONE DECOLORATING FILTER		
	Volume nylon filter housing	gal	14.5
	Nylon filter area	ft ²	42
	Filter disks	nr	26
	Decolorating housing volume	gal	3.4
	Decolorating cartridges	nr	1
	Decolorating cabon quantity	Lbs	4.4



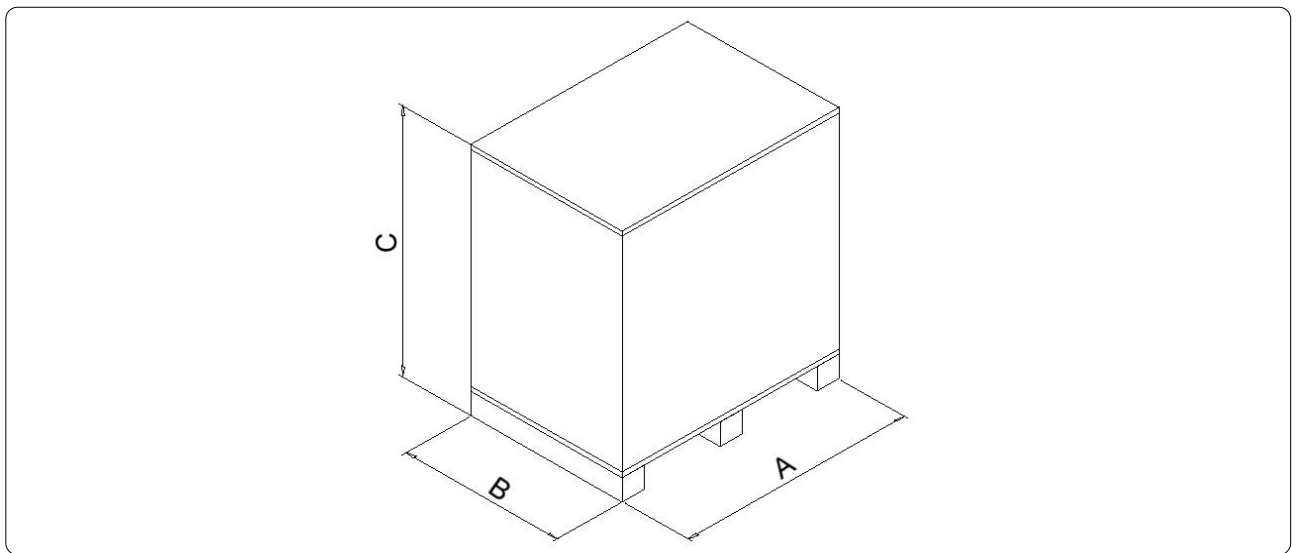
DIMENSIONS AND WEIGHTS



CHARGES		
Empty machine weight	Lbs	4012
Machine weight with solvent	Lbs	4608
Static charge on the floor with solvent	Lbs/ft²	152
Dynamic charge on the floor (+10%)	Lbs/ft²	247



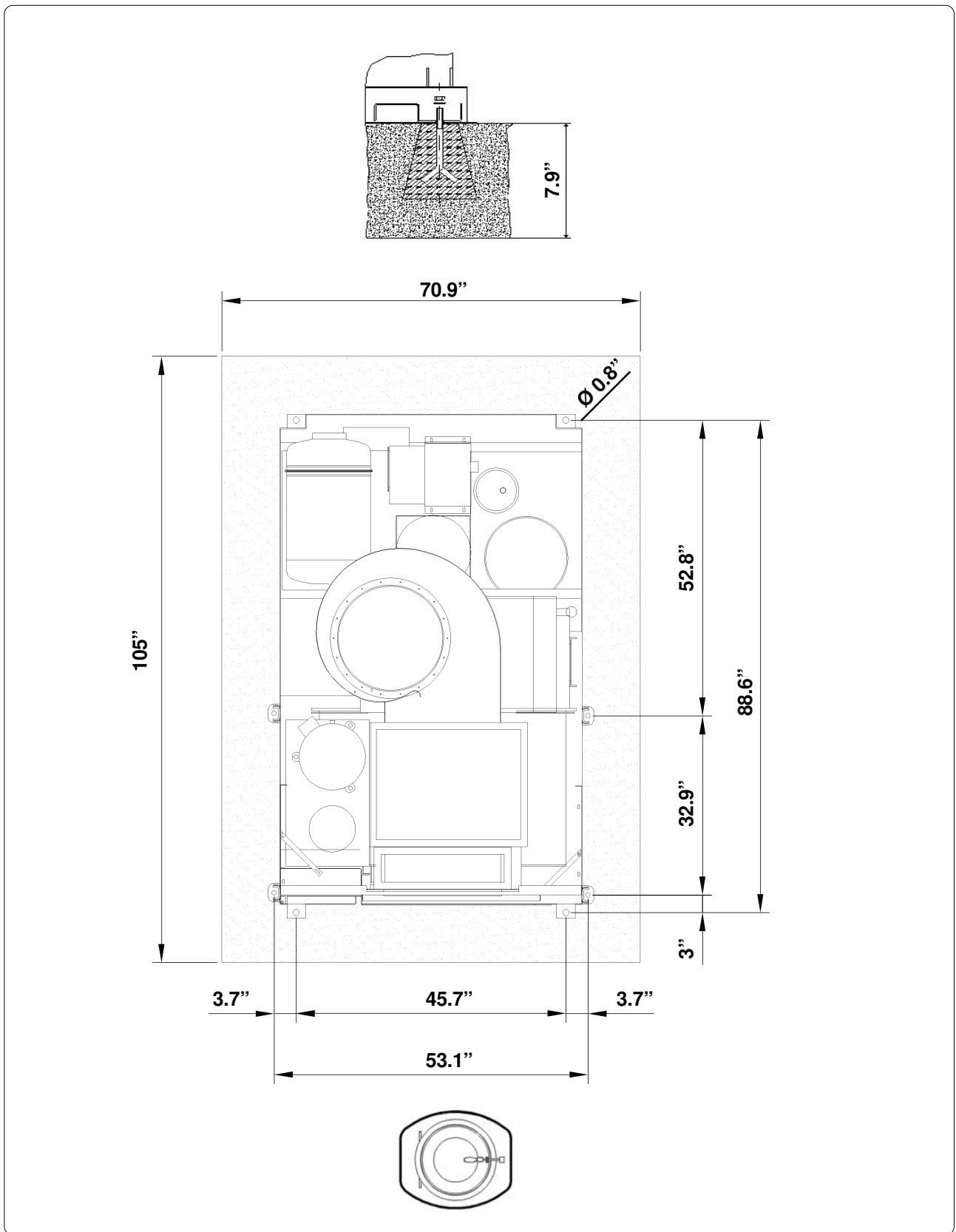
PACKAGED MACHINE DIMENSIONS AND WEIGHTS



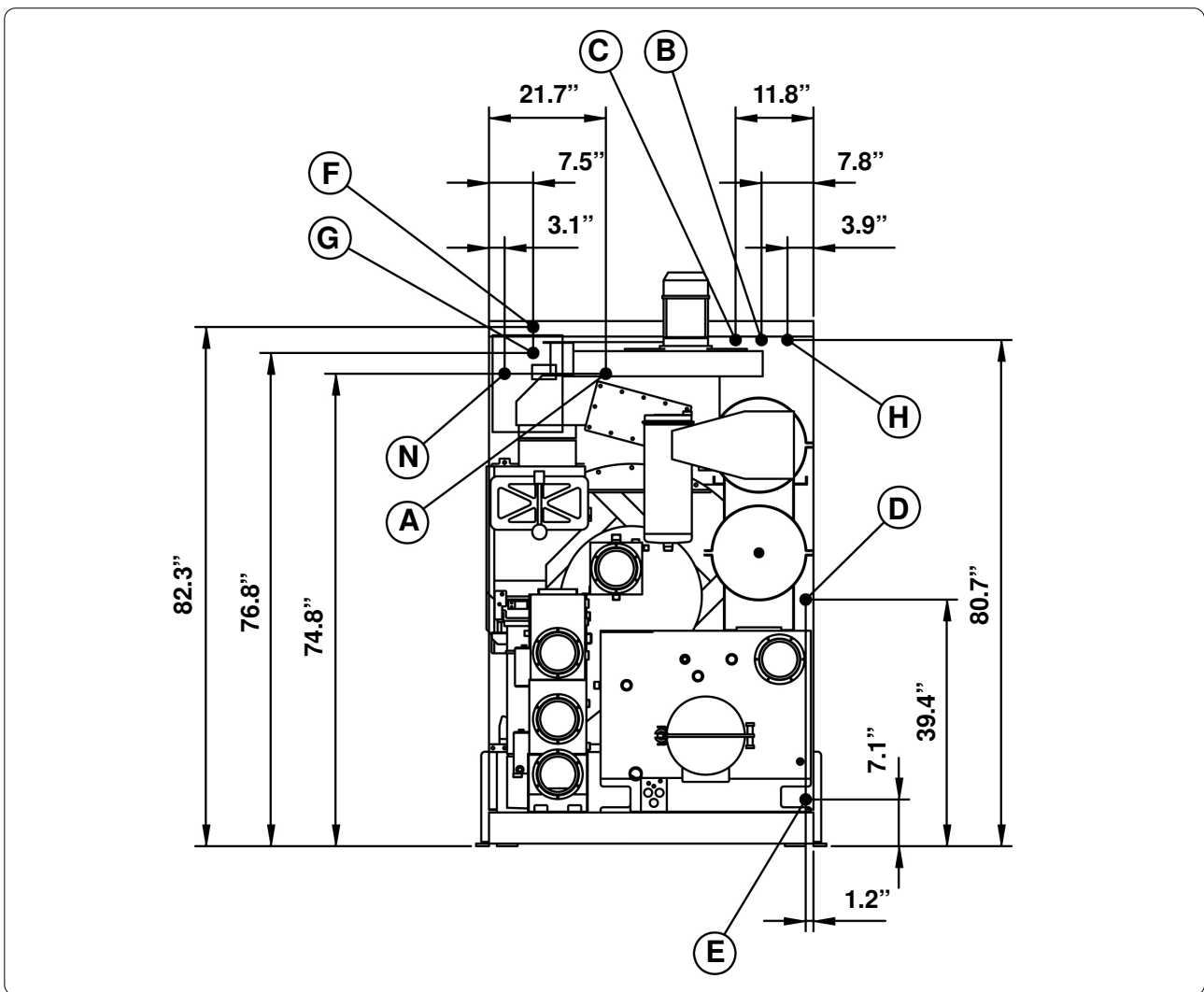
PACKAGED MACHINE DIMENSIONS				
Machine type		Carton	Wooden cage	Wooden case
Standard	A	inches 94.9	inches 96.5	
	B	inches 58.7	inches 60.2	
	C	inches 96.1	inches 92.1	

PACKAGED MACHINE WEIGHTS				
Machine type		Carton	Wooden cage	Wooden case
Standard		Lbs 4255	Lbs 4409	

FIXING POINTS



CONNECTIONS



A	Compressed air inlet	Ø 6 mm / Ø 1/4"
B	Water inlet	Ø 1"
C	Water outlet	Ø 1"
D	Steam still inlet	Ø 1/2"
E	Condensate still outlet	Ø 1/2"
F	Steam heater inlet	Ø 1/2"
G	Condensate heater outlet	Ø 1/2"
H	Electric connection	
N	Nitrogen feeding connection (N ₂)	



SOLVENT TYPE		HYDROCARBON / GREEN EARTH / SOLVON K4			
NECESSARY QUANTITY OF SOLVENT TO FILL THE MACHINE					
Machine Version - 03	gal	94	Lbs	602	
Machine Version - 08	gal	97.5	Lbs	624	

INFORMATION FOR THE ELECTRICAL CONNECTIONS (220V - 60Hz)				
ELECTRIC Version	Kw	-	Amp.	-
STEAM Version	Kw	14.5	Amp.	55
Dissipated heat			Kcal	-

GENERAL INFORMATION		
Required water capacity	gal/min	2.6
Required water pressure	PSI	43 ÷ 72
Required water temperature	°F	64.4 ÷ 73.4
Required air pressure	PSI	101 ÷ 116
Required steam still pressure (Steam Version)	PSI	36
Required steam heater pressure (Steam Version)	PSI	55 ÷ 72
Required steam* availability (Steam Version)	Lbs/h	176

*Relative values of dry saturated steam.

All technical data are subject to change without notice.