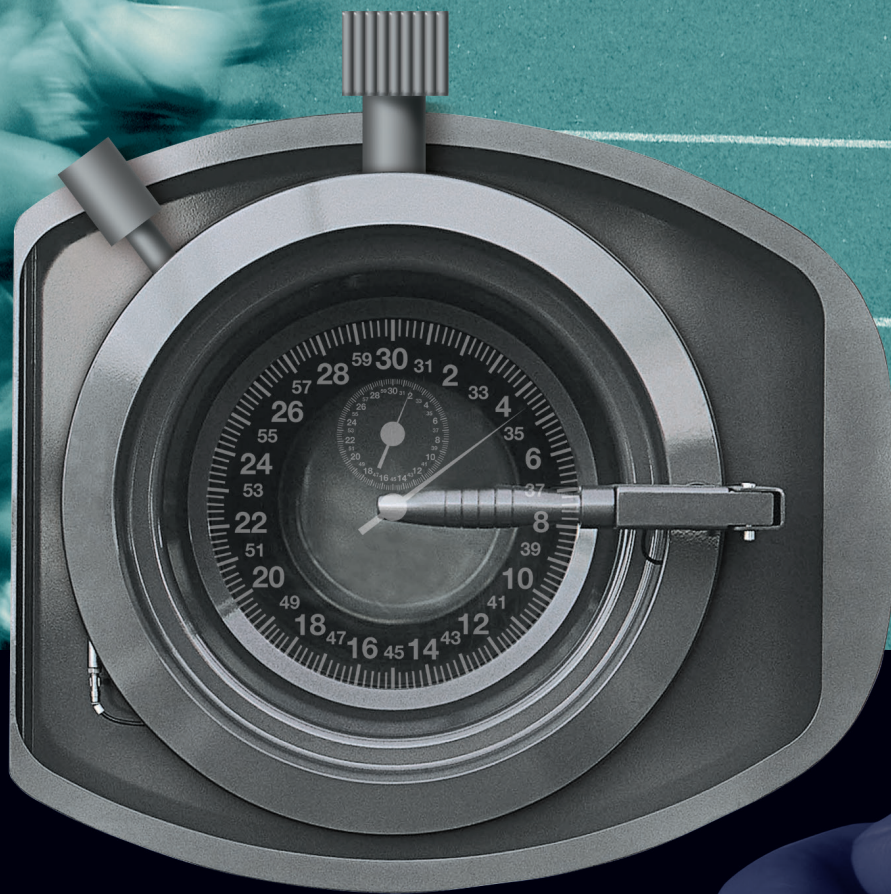


Fast. Smart. Clean.



UNION HXL8000-C SERIES

NOW THERE IS ONE SYSTEM
FOR ALL ALTERNATIVES!



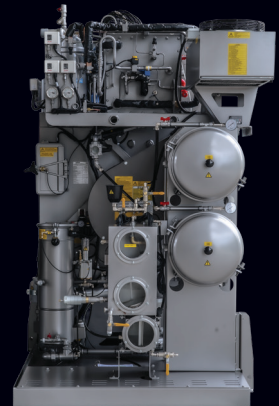
The Ideal Drycleaning System For Alternative Solvents.



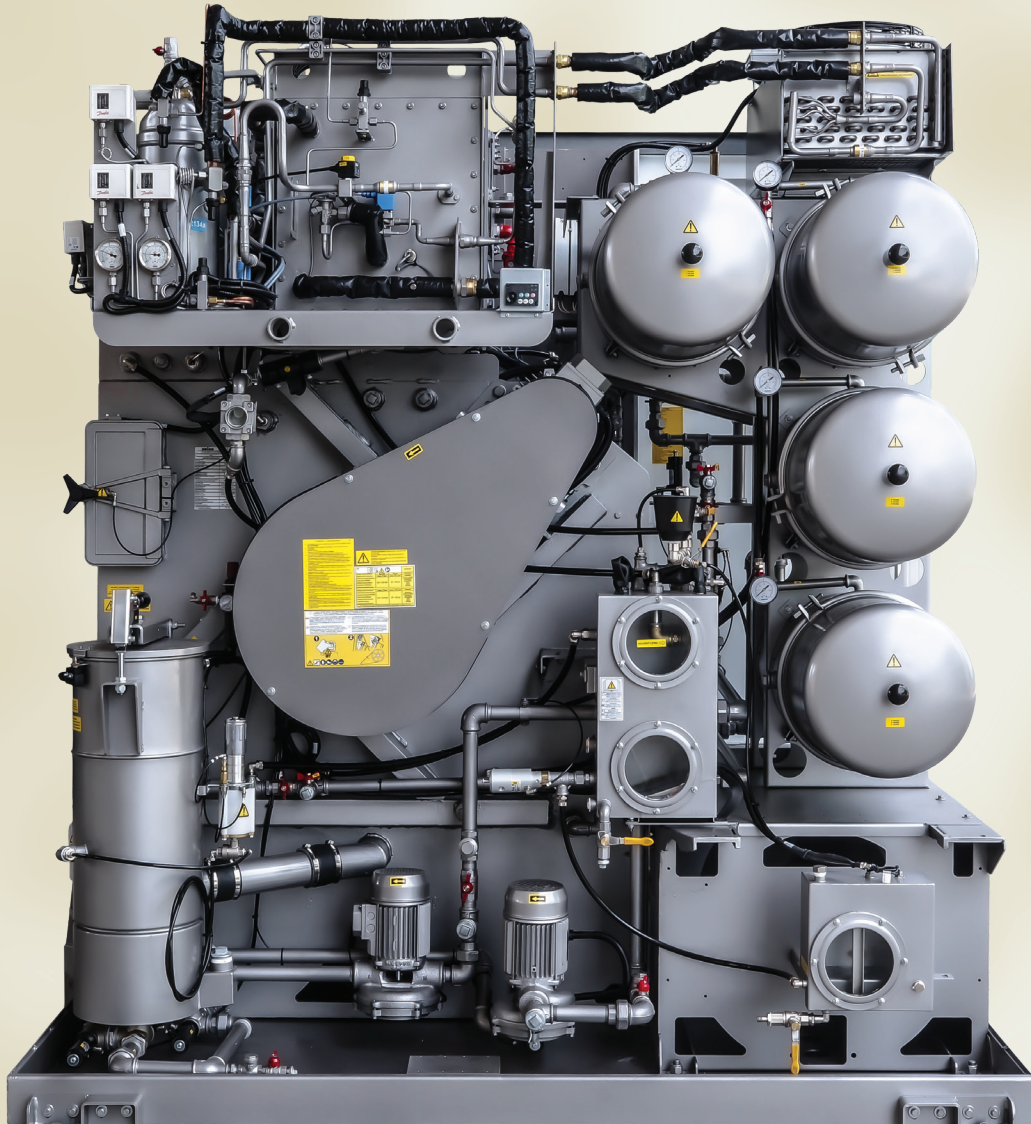
UNION HXL8000-C FAST. SMART. CLEAN.



All models of Series HXL8000-C are multi-solvent, designed to get the best from hydrocarbon and silicon solvents. Exceptional cleaning, economy and ecological performance in 40 and 60 lbs load capacities. Large-access loading door. Cyclonic Airflo® basket. Dialog® Computer with Dialog Plus®. Frontal digital solvent/air temperature on computer display panels. Easy front access to electronics, computer and components. All models of Series HXL8000-C are equipped with two independent self-cleaning solvent tanks equipped with level control sightglasses. Extra-large Turbo 2® Fan and modular refrigeration ESD-Energy Saving Drying system, allows drying without the use of steam or water.



UNION HXL8000-C FAST. SMART. CLEAN.



Logically and ergonomically designed for convenient, easy access to all components for quick maintenance. Multiple, independent cartridge filters. Convenient access to oversized double lint filters and button trap. Extra-large Turbo 2® Fan and modular refrigeration system. Easily accessible piping. High-efficiency pumps. Industrial grade stainless steel and brass in all critical areas. Heavy-duty steel containment base. 24-volt computer circuitry. Dialog Plus® is the latest advance in computerized operation technology for drycleaning. It is standard on every new Union HXL8000-C Series System! With Dialog Plus® you can run different multiple programs without having to change temperature settings or inverter drive speeds. All electronic components ETL-listed (for North America) or CE Standard.



The Ideal Drycleaning System For Alternative Solvents.

Technical Specifications:

		HXP8018-C	HXP8025-C	HXL8018-C	HXL8025-C
LOAD CAPACITY	Lbs	40	55 ÷ 60	40	55 ÷ 60
BASKET					
Volume	cu.ft.	12	17.7	12	17.7
Diameter	inches	35.4	39.4	35.4	39.4
Depth	inches	21	25.2	21	25.2
Wash speed	rpm	20 ÷ 50	20 ÷ 50	20 ÷ 50	20 ÷ 50
Extract speed	rpm	300 ÷ 520	300 ÷ 520	300 ÷ 520	300 ÷ 520
Door opening	inches	20	20	20	20
TANKS					
Useful volume tank 1	gal	31	38	31	38
Useful volume tank 2	gal	31	38	31	38
DUAL CARTRIDGE FILTER					
Volume Dual cartridge filter housing	gal	22.5x2=45	22.5x2=45	27.8x3=83.4	27.8x4=111.2
Tubes numbers	nr	2	2	3	4
Cartridges quantity	nr	3x2=6	3x2=6	4x3=12	4x4=16
ELECTRIC POWER (220V 3ph 60Hz)					
Wash / Extract motor (with Inverter *)	Hp	1.7÷4.7	2.7÷7.5	1.7÷4.7	2.7÷7.5
Solvent pump motor	Hp	1	1	1	1
Fan motor	Hp	3.5	3.5	3.5	3.5
Refrigerator compressor	Hp	7	7	7	7
Remote Condenser	Hp	0.42	0.42	0.42	0.42
Working power (STEAM MACHINE)	kW	9.5	10.5	9.5	10.5
Required Breaker Size	Amp	40	40	40	40
CONNECTIONS SUPPLY					
Compressed air inlet	Ø	1/4"	1/4"	1/4"	1/4"
Water inlet "Not Required"	Ø	3/4"	3/4"	3/4"	3/4"
Water outlet "Not Required"	Ø	3/4"	3/4"	3/4"	3/4"
Steam heater inlet "Optional"	Ø	1/2"	1/2"	1/2"	1/2"
Condensate return heater outlet "Optional"	Ø	1/2"	1/2"	1/2"	1/2"
Steam Boiler Hp required "Optional"	BHP	1	1	1	1
MACHINES WEIGHTS					
Empty machine weight	lbs	3064	3638	3197	3858
MACHINES DIMENSIONS					
(A) Width front Machine	inches	47.2+5.2+1.1	51.3+5.2	70.9+6	78.7+6
(B) Depth	inches	88.2	94.5	65	74.8
(C) Height	inches	83.3	86	88.6	88.6
**Minimum Install Height Required	inches	80.3	83,25	80.3	83.25

* POWER CHANGES ACCORDINGLY TO THE USE OF THE MACHINE
 Note: Acoustic emission level of the machines is lower than 70 dB (A).
 Specifications subject to change without notice.

** This height will require some components to be removed from the top of the machine.

All Union Drycleaning Products described herein surpass regulatory standards set by OSHA, EPA and NESHAP, and are Certified by New York State DEC and California CARB.
 Special New York City MEA-Approved models are also available. Operating decibel levels are less than 70 dBA.
 All Union HL/HP machines have been tested and approved for NFPA-32 by ETL



UNION DRYCLEANING PRODUCTS USA
1900 Meredith Park Dr.
McDonough, GA 30253
Tel: 404.361.7775
E-mail: info@uniondc.com
Web page: www.uniondc.com

Proudly presented by:

